

# FARM ON THE ROOST.

Social farm as a community cure.

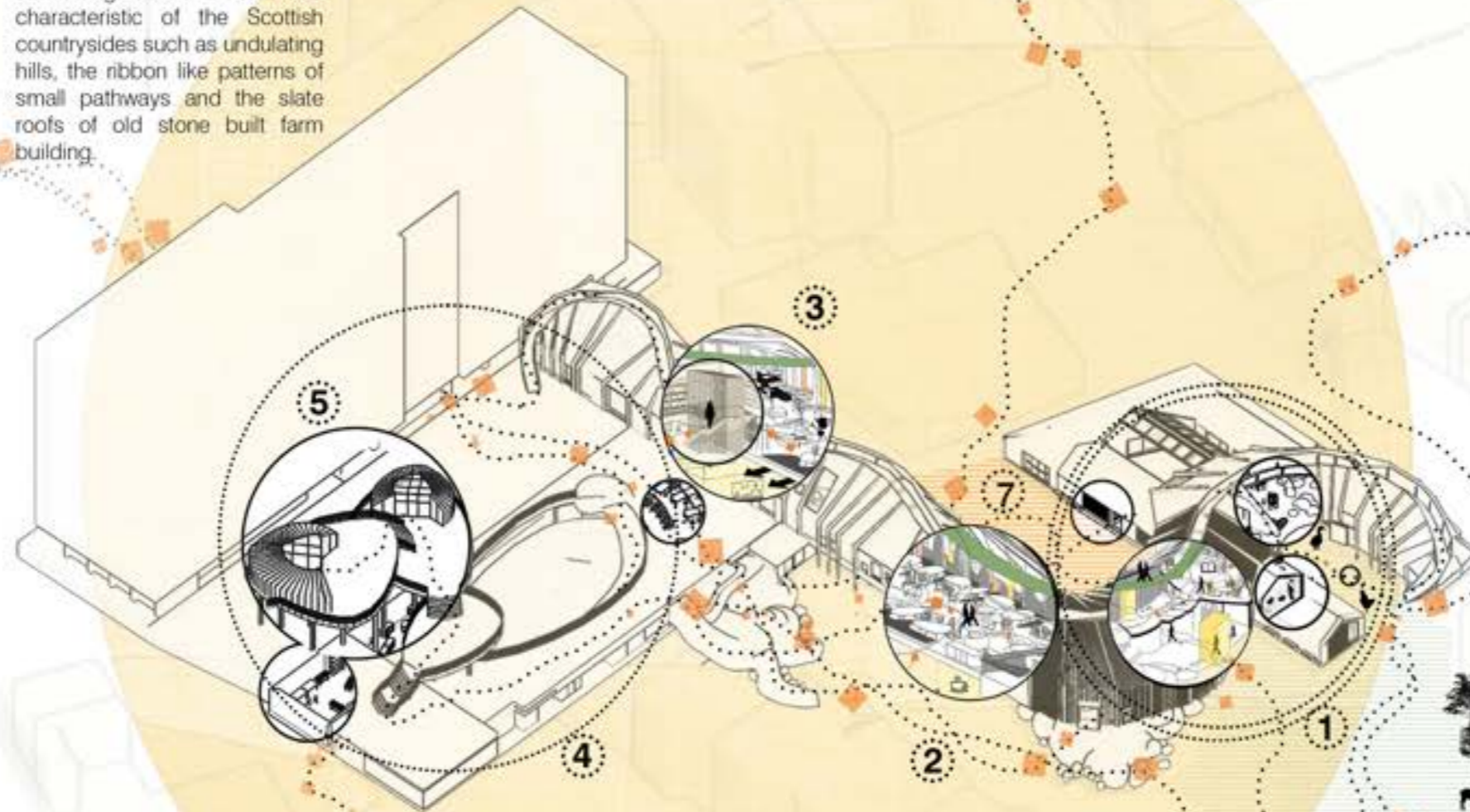


# Farm on the Roost.

Social farm as a community cure.

Farm on The Roost is a social farm. Created in order to enhance a community's coherence, support families and vulnerable people, and help to raise a young generation of social participants. Situated down near the foot of Leith walk in Edinburgh, the farm is an adaptive reuse of a block of flats and garages that have been set for demolition due to issues such as antisocial behaviour and the poor state of the flats' roofs. A partially derelict structure became the base for a new social hub that could improve the lives of the local community by tackling such issues like drug abuse and social alienation. The farm offers the possibility for learning and self-development by providing access to facilities like the Creative Cave which includes wood and pottery workshops, an interactive Learning Loop, Shoot's Shack indoor vegetable garden, and Pet Pen with pet therapy rooms and a children's playground. The whole complex creates a place to escape where the user can find some

some mental peace either by engaging in gardening activities, animal care, practising arts and crafts, or simply interacting with the neighbours by having a cup of tea at the Café on The Roost. The architectural form of the building reflects the idea of combining elements that are characteristic of the Scottish countryside such as undulating hills, the ribbon like patterns of small pathways and the slate roofs of old stone built farm building.




## CONTENT

- 01: Concept
- 02: Research
- 03: Concept Development
- 04: Structure Development
- 05: Floor Plans
- 06: Facilities Development


## FACILITIES

- ① Learning Loop
  - Trunk Track
  - Attic Art Room
  - Pet Therapy Rooms
- ② Cafe on the Roost
- ③ Shoots Shack
- ④ Creative Cave
  - Pottery Workshop
  - Wood Workshop
- ⑤ Veg Roost
- ⑥ Pet Pen
- ⑦ Playground



 [www.krcreates.com](http://www.krcreates.com)

 [@karolina\\_k\\_r](https://www.instagram.com/karolina_k_r)

 [rzeznikkarolina1@gmail.com](mailto:rzeznikkarolina1@gmail.com)

Karolina Rzeznik

# 01: Concept

The local community takes pride in the regeneration of the Leith that have been achieved over the last few decades. Renovated facilities, streets and pathways stretched along the Water of Leith means that the area welcomes thousands of tourists each year, wishing to find decent, reasonably priced accommodation within a short distance of the city centre. The spirit of conviviality, pub culture and part-time job opportunities also make it a popular spot for student accommodation. Yet, paradoxically the gentrification endangers the future of local businesses and Local communities by encouraging big-profit, and commercial investments, which pushes up housing prices and leads an unaffordable housing problem. The fear now is that the community that presently lives there may one day be forced to split up

and relocate due to rising rents. Many of the families living in Leith struggle with poverty which is often linked to drug abuse or gambling. Dozens of pubs and betting shops may seem to add to the liveliness of the neighbourhood, but they also contribute to negative habits and antisocial behaviours, especially as there is no alternative entertainment. The news of the redevelopment of Leith's Coatfield Lane and Giles Street evoked my curiosity, wondering how they would develop in the future. I decided to take a chance and adapt a part of the existing structure to my own vision. The design goal was to propose a solution that could improve the lives of the local community by giving them more options on how they spend their free time. By offering a mixture of activities that attract all age groups and genders everyone

could get an opportunity of trying new activities and forming new bonds. The concept of a social farm as a social cure for a community emerged during my research for my dissertation where I was discussing the impact of biophilic design on future schools. Many educational sites use their own farms as a learning tool, but it often happens that such farm become a hub for a community to gather and thrive. Working with animals or gardening has the power of unifying people in a common passion, giving them a sense of belonging and purpose.



Applying guidelines sourced from nature and taking inspiration from what is rural and intrinsic to humans as social beings, helps me to find solutions that bring out the best in human behaviour. By trying to find a balance between the needs of our physical bodies and needs of our minds and souls.



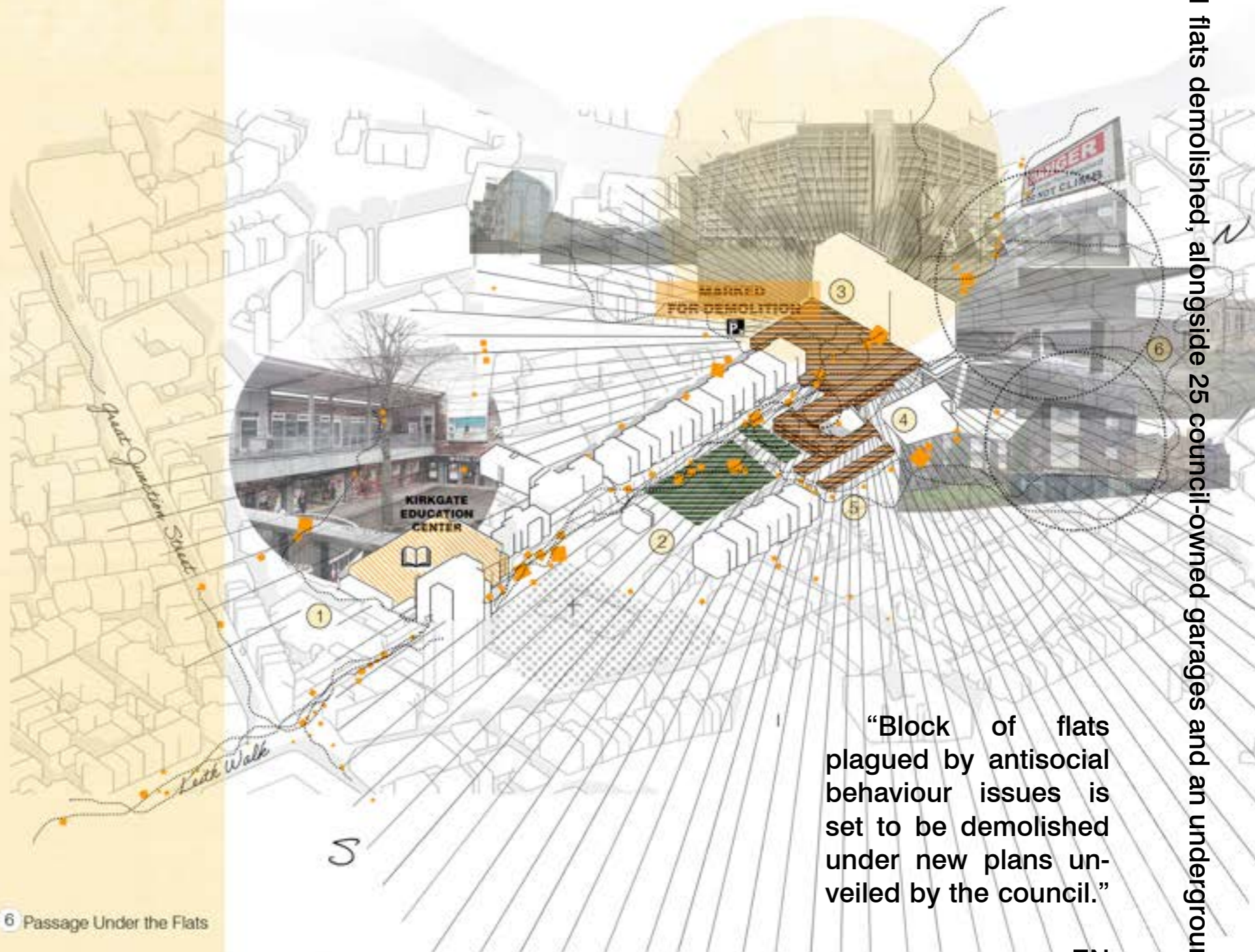
Karolina Rzeznik

# 02: Research

“Leith’s Coatfield Lane and Giles St flats marked for demolition.”

- Edinburgh News

The area is situated in the north of Edinburgh, close to the Kirkgate shopping and Education centre. A green corridor spreads along Giles Street linking Leith to the Shore area. Its central location and proximity to the community centre make demolition more likely as the space could be used to expand the hub, allowing greater access to its facilities.



“21 flats demolished, alongside 25 council-owned garages and an underground car park.”



# 02: Research

## I N T E R V I E W



May Hayati

“Leith doesn’t have a main social hub where community could gather. It feels displaced.”

**KR:** Could you tell me about your work at the Leith community centre?

**MH:** We are a group of friends who share a desire to contribute to community life. We run children classes in three age groups. Our program concerns a part of education that is not always provided by schools and is often missing in home environment. We teach them virtues like generosity, love, justice and how to find a source of happiness in

times, when technology so easily replaces bonds between human beings. Lessons are based on the memorization of virtues by art, story telling and other activities that help children to embrace them in life.

**KR:** You have worked at the Leith community centre for nine months now. What have you learnt about the local community over that time?

**MH:** Many children attending classes come from quite troubled backgrounds. The children are often from single parent household, often with a history of drug abuse. This can be seen in their behaviour and in their relationship with the world. I think that Leith community has a great capacity to good. It must only be channelled in a right direction. People in Leith really care about their community. This sense of identity as well as cultural diversity give to Leith such a unique spirit.

**KR:** Leith is quite famous for its pub atmosphere and Shore’s restaurants which attract tourists and students. A big part of Leith’s residents sees their daily routine of visit in local pub as a form of social bonding. However, that is often linked with other issues such an alcoholism or violence. Do you think that Leith provides its community with services that offer other forms of spending free time and socializing or opportunity of self-development?

**MH:** Obviously, there is the community centre, but it is not the most aesthetic and inspiring place.

There is also the community cafe but it doesn’t give you the spirit of a real social hub. It opens in quite early hours when kids are at school what doesn’t help. There are few other places where you can go, but it is all scattered around Leith. There is no main social hub that could be a heart of the Leith

**KR:** I’ve briefly described you my vision of the city farm. What do you think about this concept?

**MH:** I think this is such a fantastic idea, and if it would come to life it could really become a hub that would be a heart of this place. Working with nature, especially animals could be also a great tool to teach children about the empathy or how to be gentle. That would be a wonderful place to be with your neighbours or enjoy craft works.

“Our program concerns teaching children virtues that are often missed in school school or domestic environment such as generosity or love.”

**HEART OF THE COMMUNITY**  
 "Leith has a unique identity, heritage and sense of community that means so much to so many and we must do all we can to preserve that."  
 -Council leader Adam McVey for Edinburgh News

**COATFIELD LANE'S & GILES STREET'S Demolition: Chance for a Better Community Center**

**DRUG ABUSE**  
 "In recent years the Coatfield Lane and Giles Street block has become a hotspot for antisocial behaviour – with the underground car park now securely closed off due to problems with drug abuse."

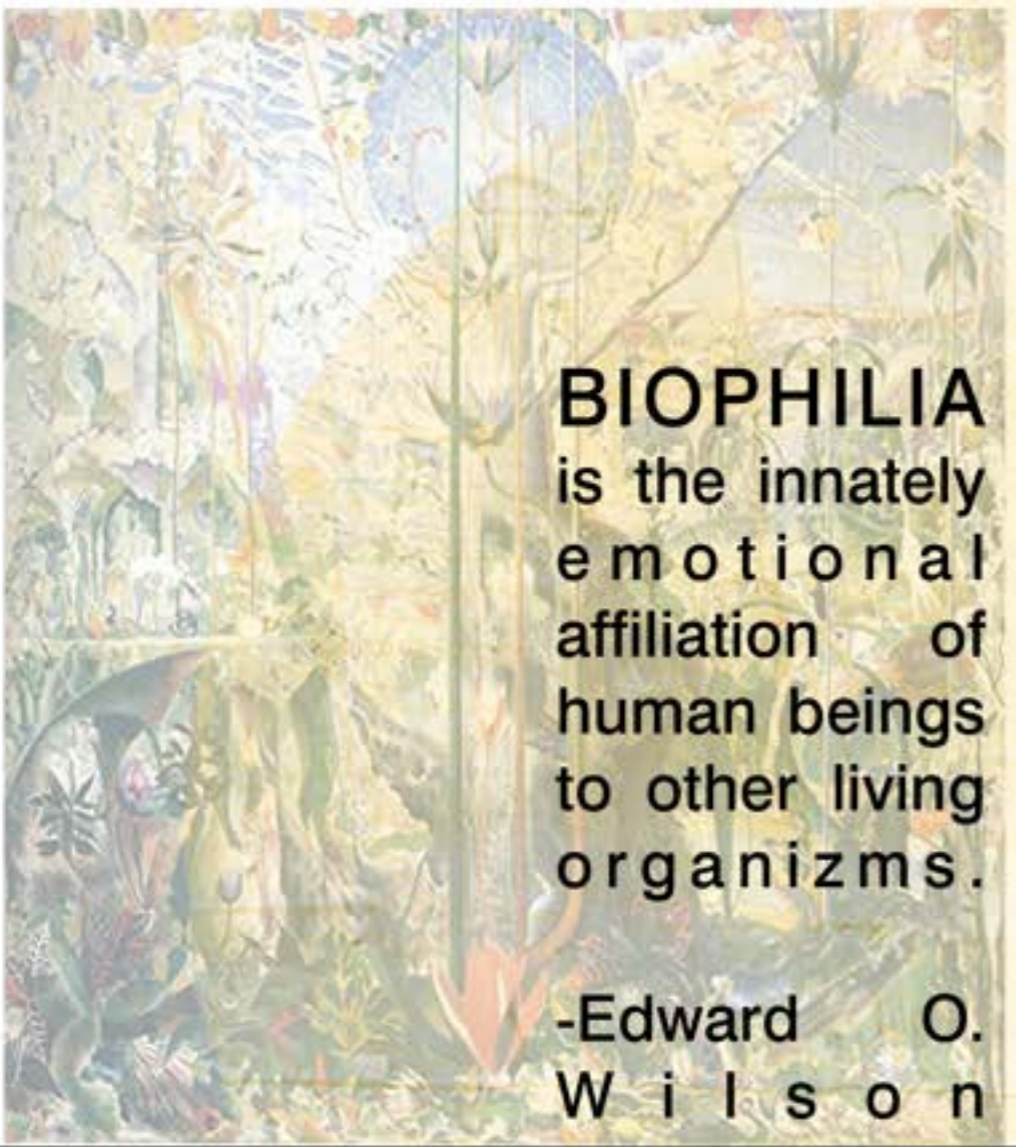
**VANDALISM**  
**POVERTY**

**EDINBURGH**  
 LEITH  
 KIRKGADE CENTER  
 FAIRMIDLEHEAD

**EDUCATION, THERAPY, LEISURE & ENTERTAINMENT ACCESSIBLE TO ALL**

"The redevelopment of that area will bring opportunities to have additional walking routes through there, or Leith historic trails, and we should be looking at that."  
 Green councillor Chas Booth for Edinburgh News

# 02: Research



**BIOPHILIA** is the innately emotional affiliation of human beings to other living organisms.

-Edward O. Wilson

Lack of consideration for mutual reliance between humanity and nature has been found to be damaging to the natural environment, social interactions and general well-being. Presence of nature impacts physical and mental health of individual people, but this way it also causes changes in society and culture.

## BENEFITS OF THE BIOPHILIC EXPERIENCE

### MUTUAL RESEARCH

Respect towards nature, teaches people to respect each other, cooperate at the social level and share knowledge and in order to grow stronger together

-Curry 2011.

### SENSE OF BELONGING

Recognition of social belonging may be supported by understanding humans as an indissoluble part of the nature as that indicates the internal unity with our place in the world.

### IMPROVED BEHAVIOUR

The research carried by Kou and Sullivan in Chicago, states that people who were randomly assigned to live in a presence of a green area, are less likely to show aggressive behaviours like vandalism. They will also develop a more positive interaction with their neighbours.

Being around nature eases human sympathetic activity which results in a better ability to focus, elevates level of endorphins and balances a neuro system what keep people satisfied and rational

-Yin 2018

## DEVELOPMENT CHILD

Development of biophilia is a significant factor shaping growing human beings. Nature creates an extraordinarily rich learning library that could positively impact children's creativity and resourcefulness. Interaction with living nature, helps burgeon a child's sensitivity and empathy for other humans and wildlife.

- White and Stoecklin.

## SCHOOL FARM

Trottiscliffe School run a community farm that serves children during the classes and provides a direct contact with living nature as well as teaches to care for it. It is also a place where they can enjoy being with their friends and family after school. The informal character of that place creates an emotional attachment by creating memories of time with loved ones and sparks a sense of belonging to the farm.

## THERAPY NATURE-BASED

Considering the significance of quality of life in our modern stressful society, the importance of nature therapy will further increase. The therapeutic effects of natural stimulation suggest a simple, accessible, and cost-effective method to improve the quality of life and health of modern people.

-International Journal of Environmental Research and Public Health



To experience the range biodiversity is crucial for humans, especially at the early stages of our development. -Keller 2015

# 02: Research

## INTERVIEW WITH AMBER ISAACS

Project Manager for LOVE Gorgie Farm

**KR:** Have you considered the possibility that the farm could have been permanently closed down and what would it mean for you, your co-workers and all others involved in its life? What role does the farm play in your life and life of the local community?

**AI:** Yes, it was certainly something myself and my colleagues considered at the beginning, just after liquidation. We were originally told the farm would be closing and all animals would be moved off site. We worked hard to find new homes for all the animals, and had that all lined up. For me, it would have had a massive impact. The farm has been a huge part of my life – I've been coming here since I was a kid. There was so much potential and so many plans I wanted to be involved in. I

**“Not only will the farm remain open seven days a week and remain free, but we will provide a range of exciting education, environmental and social care programmes.”**

- Lynn Bell, LOVE CEO

wanted to help make it sustainable. As well as this, it was my sole income, and I have my own flat and I live alone. I actually took on a part time job to ensure I had secure income in the event we weren't kept on, so working two jobs to ensure I was safe and that I could help maintain the farm. I know for my colleagues, they too have a big passion for the place and to lose that would have been equally devastating for them. So many people in this city have such love for the place, and rely on the services we have offered. For example, we have free entry for families and those on low incom, who are unable to afford access to other public facilities. It would have been devastating to see it close its gate permanently, shown by the amazing fundraising campaign ran by former staff. It's a focal point of this community, and the support they showed to ensure it stayed open was amazing and shows the value of it.

**KR:** One of the first noticeable changes is the farm's name. Could you tell me more about this idea?

**AI:** Yes, we are now LOVE Gorgie Farm. The name change was to reflect our new management, as part of the takeover. We were thrilled when we found out LOVE Learning were taking over, and it's been great to work with them and discuss ways to expand the project and make it sustainable, even during this time. It is also nice to have 'Love' in our name as it is part of our ethos.

**KR:** What strategies were embraced by LOVE Gorgie farm in order to keep it going? What are the most significant programme differences between LOVE Gorgie and Gorgie City Farm?

**AI:** As mentioned, there were criteria that LOVE needed to be able to meet in order to be successful with the take over. Part of this was keeping it free entry, another part was about what services we would

### The farm was forced to close last year amid cash troubles but has now been taken over by Now Love Learning.

for young people and those with additional support needs. We were doing this before, in the previous iteration of the farm. There are not that many significant differences between the two. We are still free, we still offer volunteering, we still have animals and the garden, we still do pet boarding etc. There are small things that have changed, like we no longer profit off animal slaughter – we don't send animals to slaughter like the previous farm did. There is also an expanse in what services we will provide, in line with the other services that LOVE provide. They have a care division, so we will be tying into that and helping support their service users by offering them activities on site for example. They also have education services, helping find alternative teaching methods for young people who struggle in conventional education, which we can base out of the farm.

**KR:** What do you love the most about your job?

**AI:** I think there is nothing better in life than working a job that helps people. I've been very fortunate to be working in roles supporting vulnerable volunteers since I was 16, and it has shaped the person I am. I love finding ways to help and support people, be that by facilitating volunteering, or sending them a food parcel, or letting them meet an animal, or explaining the opportunities in animal/agricultural work, or even just chatting about the weather. It's an incredibly multifaceted role, just as the farm itself is. I never stop learning and developing and it's an exciting time to be involved with the farm!

### LOVE GORGIE FARM



**E D I N B U R G H**  
"LOVE Learning's proposal meets the community's aspirations for what continues on the site – free for families to visit, open seven days a week and supporting and providing opportunities for vulnerable young people and adults. It buys into the values of volunteering, education, farming, supporting everyone in our communities as well as providing a sustainable and financially secure future for the site."  
-Lynn Bell, LOVE CEO

### VAUXHALL CITY FARM

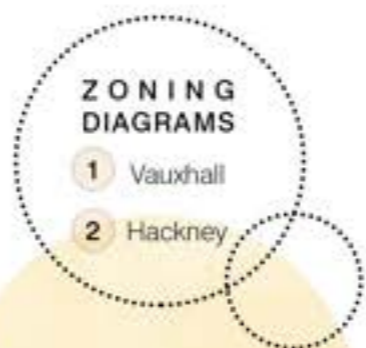


**L O N D O N**  
"Our vision is a city where people from all communities are empowered to experience nature to enhance their health, well-being and life changes and we use the setting of our farm to provide a wide roap of educational, recreational and therapeutic support, programmes, and activities."

### HACKNEY FARM



**L O N D O N**  
"Mix of commercial and community activities enhance the farm's sustainability whilst investing in the local community."



### COMMON FACILITIES

- CAFES
- ROOMS FOR HIRE
- BOARDING HOTEL
- WORKSHOPS
- THERAPY ROOMS
- STOCK HOUSES
- PENS

### WHAT IS OFFERED BY SOCIAL FARMS?

- CONTACT WITH LIVING NATURE
- COMMUNITY SUPPORT
- WORKING WITH VULNERABLE
- VOLUNTEERING PROGRAMES
- SKILL DEVELOPMENT PROGRAMES
- ART & NATURE-BASED THERAPIES

GOALS & TACTICS EMBRACED BY SOCIAL FARMS

# 03: Concept Development

# ROOST

As a Project's Leitmotif

## MEANING

In Social Context

The title Roost figures as the loudest, most colourful, and vivid zone of a classic farmland. From the first sunrises of dusk, birds begin to maintain their nests, pick seeds and most of all-tweet, raising the constant chatter that can be heard from a long distance. The liveliness that can be seen at birdhouses became a metaphor to what the new Leith's community hub should be like and feel like.



•THRIVE• — •GATHER• — •SOCIALIZE•

## INSPIRATION

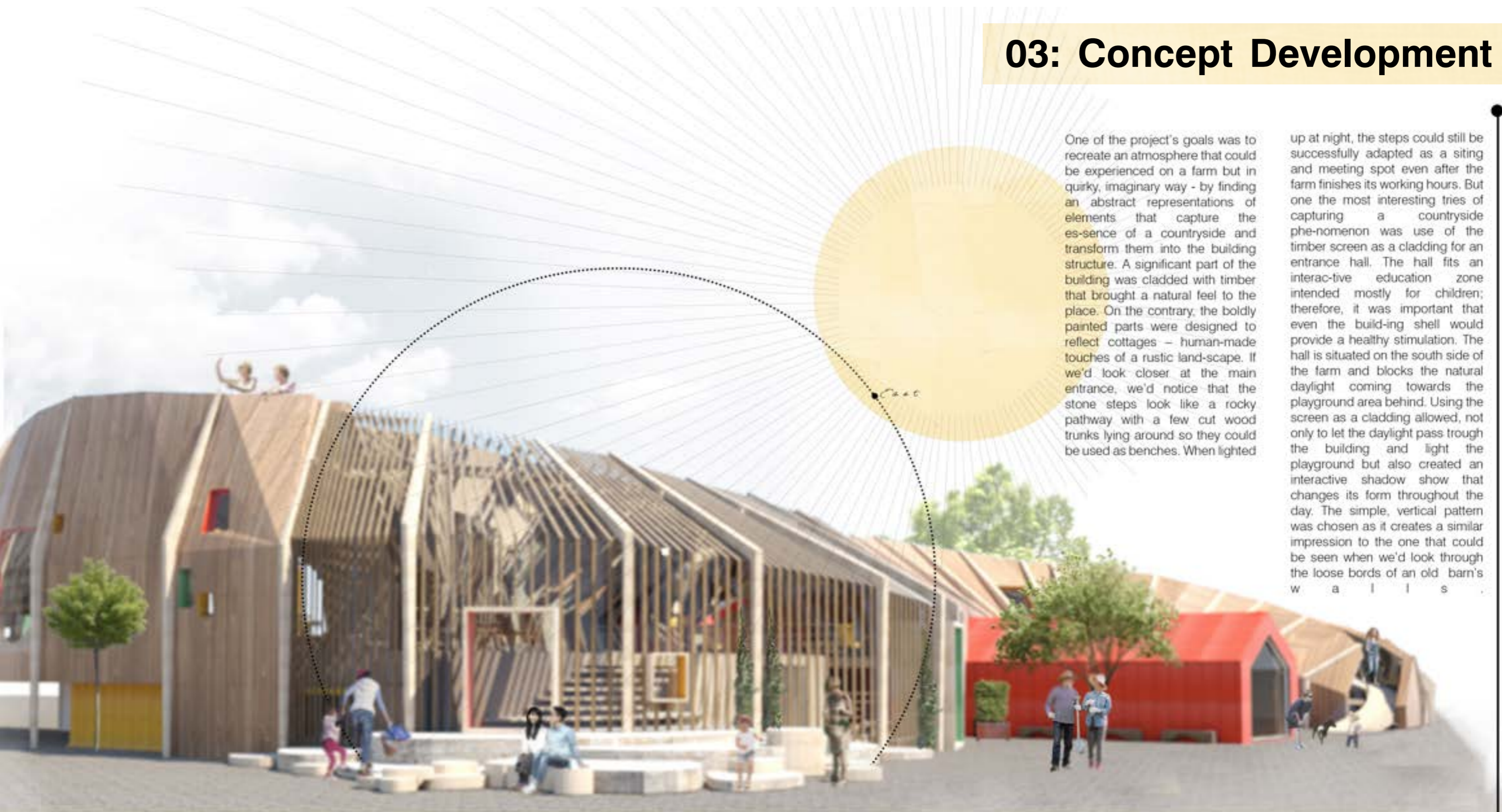
To Building's Architecture

Roost as a part of a rural landscape represents a mixture of what is both human and nature made. When we think of a roost, we could also think of structures as vivid as nests, birdhouses, or tree hollows. As concepts, they all give us the same sensation of cosiness, comfort, and safety of a home. The idea of this project was to re-create this sensation by using diverse and overlying forms, colours, and textures when, at the same time, preserving the rustic and naturalistic feel. It allows to create a patchwork kind of architecture that we could observe if we'd imagine clustered, piled up and quirky birdhouses, all coloured and shaped differently. Mixed heights and levels as well as a variety of different spatial approaches add an extra dimension and complexity to a space and create a rich and stimulating environment where a local community could engage in social and educative activities.





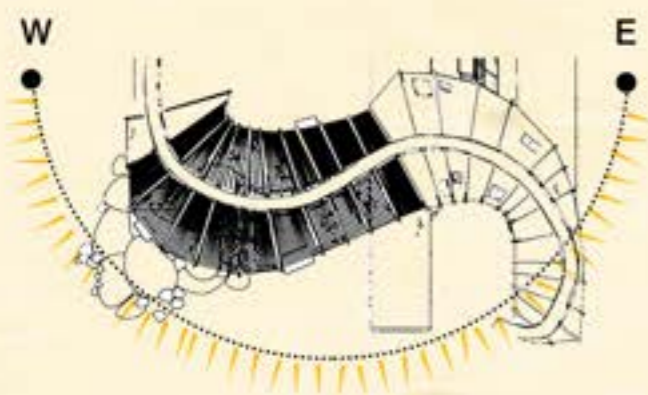
# 03: Concept Development



One of the project's goals was to recreate an atmosphere that could be experienced on a farm but in quirky, imaginary way - by finding an abstract representations of elements that capture the es-sence of a countryside and transform them into the building structure. A significant part of the building was clad with timber that brought a natural feel to the place. On the contrary, the boldly painted parts were designed to reflect cottages – human-made touches of a rustic land-scape. If we'd look closer at the main entrance, we'd notice that the stone steps look like a rocky pathway with a few cut wood trunks lying around so they could be used as benches. When lighted

up at night, the steps could still be successfully adapted as a siting and meeting spot even after the farm finishes its working hours. But one the most interesting tries of capturing a countryside phe-nomenon was use of the timber screen as a cladding for an entrance hall. The hall fits an interac-tive education zone intended mostly for children; therefore, it was important that even the build-ing shell would provide a healthy stimulation. The hall is situated on the south side of the farm and blocks the natural daylight coming towards the playground area behind. Using the screen as a cladding allowed, not only to let the daylight pass trough the building and light the playground but also created an interactive shadow show that changes its form throughout the day. The simple, vertical pattern was chosen as it creates a similar impression to the one that could be seen when we'd look through the loose bords of an old barn's w a l l s .

C O U N T R Y S I D E  
E X P E R I E N C E



Around Pavilion-Christiansen Andersen



Chapel of Reconciliation-Reitermann & Sassenroth



## M A I N   E N T R A N C E



ORGANIC



RURAL



PLAYFUL



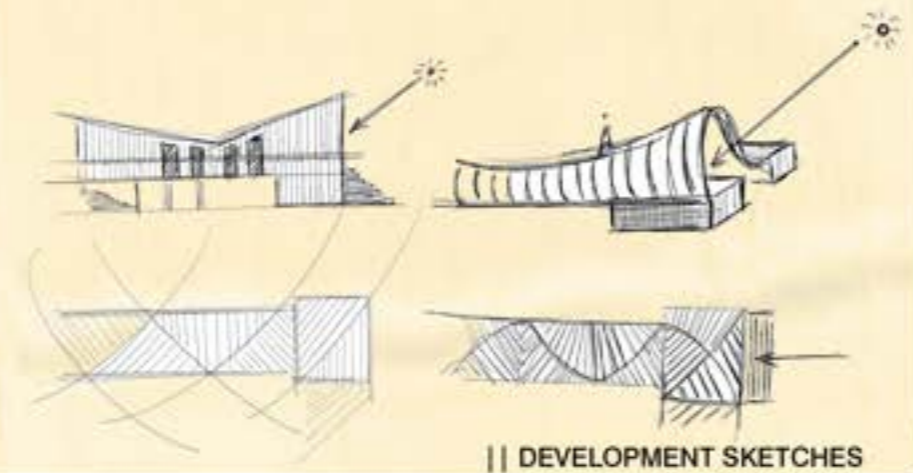
A  
R  
C  
H  
I  
T  
E  
C  
T  
U  
R  
A  
L  
  
I  
N  
S  
P  
I  
R  
A  
T  
I  
O  
N

### CONCEPT OF A PATHWAY

An inspirational journey through the Scottish countryside began with a concept of the Roost. Yet, it also pointed towards elements characteristic to the Highlands scenery. In its form, a landscape filled with wavy hills, rivers, bridges, fences, orchards, and never-ending pathways creates an idyllic picture of a place that people would associate with playfulness and safety. Diversity of form of a mountain lands, similarly to birdhouse's structure, attracts human hearts as it allows for an expression of a freedom and awakening of an inner child. Biophilic sciences state that it is intrinsic to human nature to seek spaces that will give them a sense of peril as well as curiosity and wonder, that will allow them to look at the distance but also provide a shelter. Those observations awaken the idea of shaping the Farm's building, so it reflects hills and cottages tossed among them. This could supply the farm's guests with a possibility to enjoy the structure form the outside, similarly as they would enjoy walking through wavy hills.

### ROOFLINE DEVELOPMENT

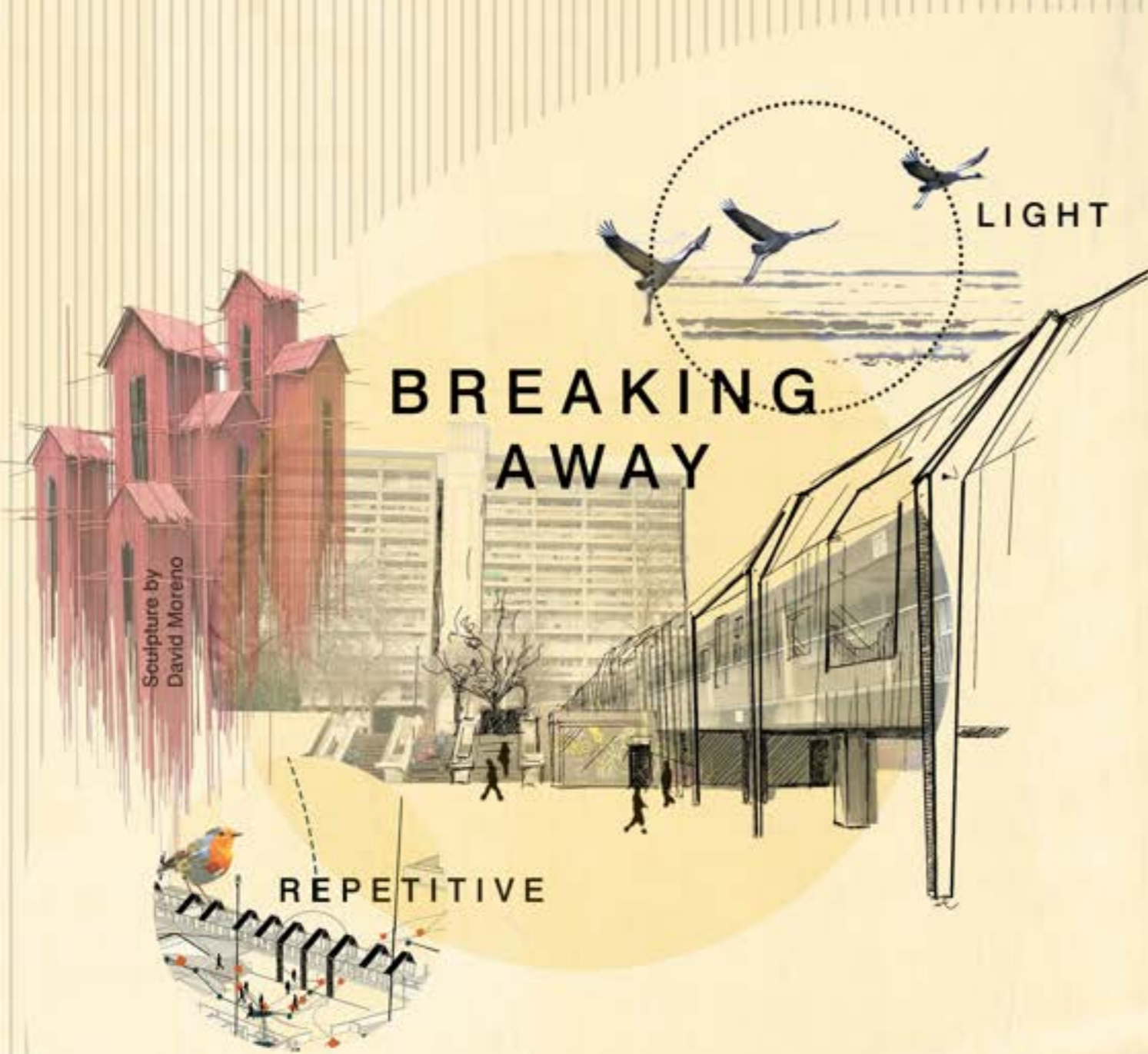
The idea for shaping the roofline was to split it into smaller components and give them different geometry so they start to remind lining up hills. Space division was also necessary due to the substantial length of the 1st floor block which could be overwhelming, both from the outside and the inside perspective. Initially sharp and bold geometrical cuts, then began to turn into something much more organically shaped. The flow of the serpent roofline allowed to mimic curves and rhythms of a countryside pathway walk. The forehead of the building, clad with a timber screen and glazed, is situated at the south side of the farm. It serves as the main entrance and the interactive educative zone. It has been designed to be the highest lifted part of the roof to maximize the amount of the daylight going into the long 1st floor block which fits the community cafe and an indoor veg garden. Timber screen lets the light trough what creates a spectacular shadow experience inside the main hallway as well as at the playground right behind it.



## 04: Structure Development



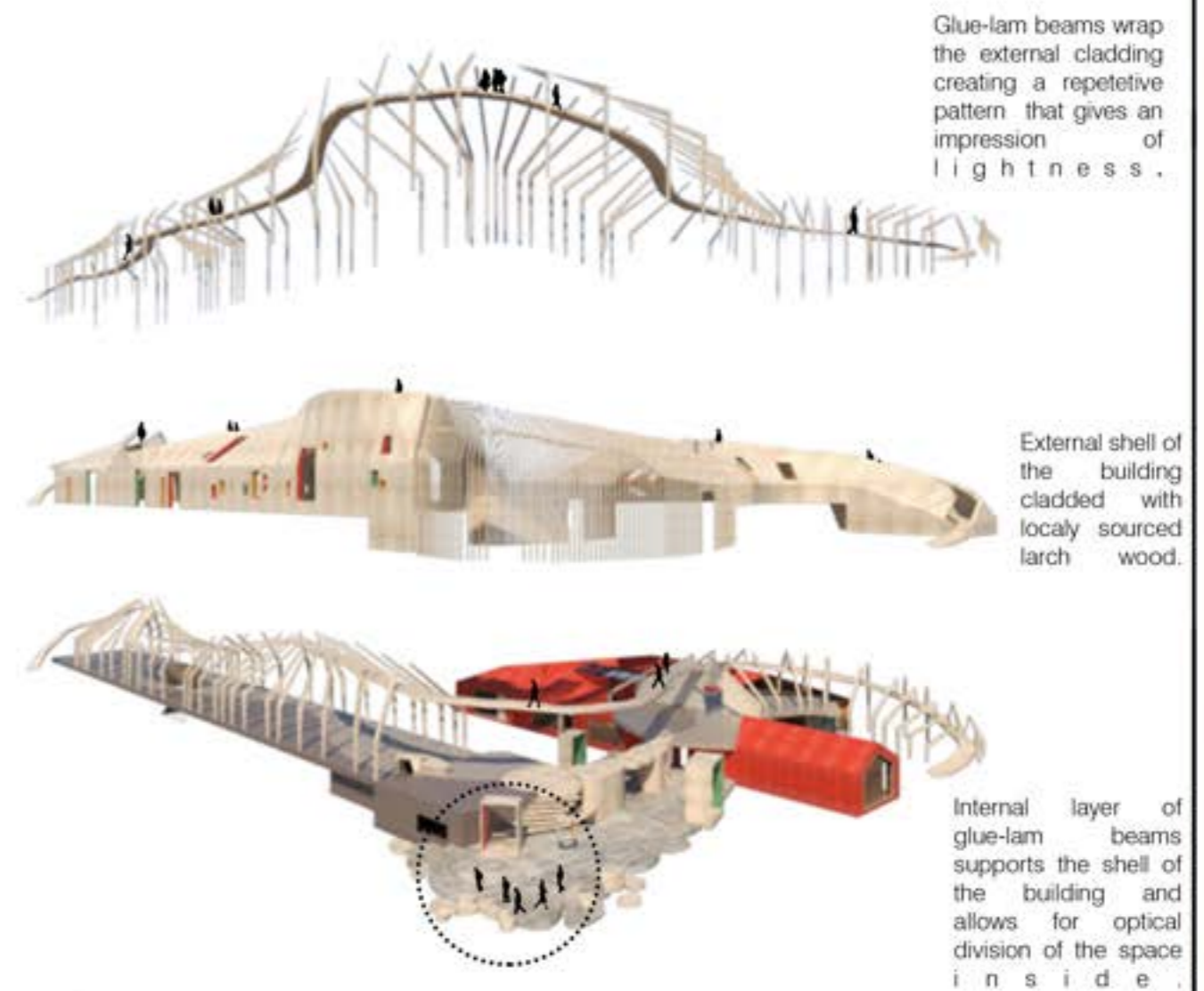
# 04: Structure Development



Coatfield Lane and St Giles Street are situated among massive, concrete, brutalist block buildings, which create a raw and overwhelming atmosphere. The new design concept adapts playfulness and quirkiness of organic forms to break away from the tendencies of the past decades. Curved roofline breaks down the geometry of already

existing buildings, but the body of the farm building reminds visually solid without the repetitive pattern created by glue-lam beams. It is for them that the heavily looking building gains lightness of a birdhouse structure. The project includes two-levelled lay-out therefore some of the external beams could be suspended from the first-floor

elevation to the pedestrian pathway what multiplied the sensation of the structure to be light weighted. Beams are carried all the way along the roofline creating a spine-like structure. Created segments give an optical illusion of the building being shorter and visually diverse.



STRUCTURE DIAGRAM



# 04: Structure Development

## SCOTLARCH CLADDING

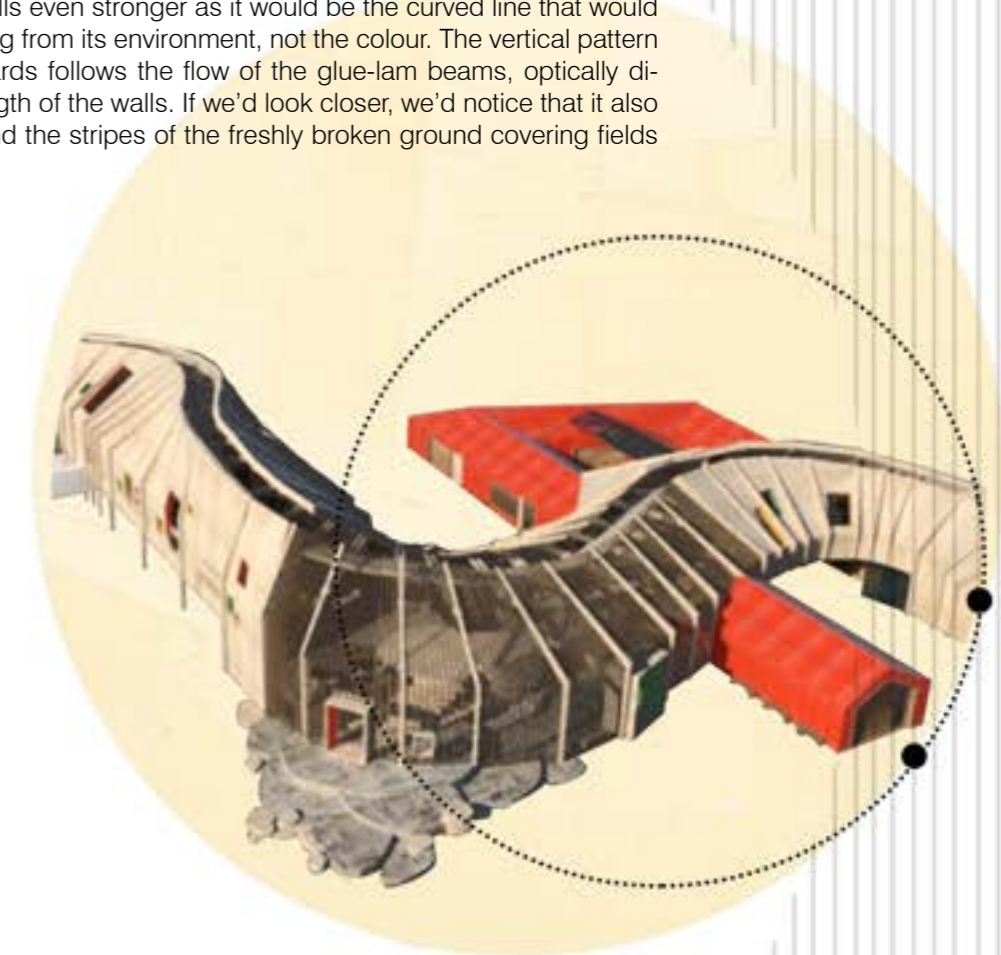


Silvering larch was chosen for the cladding of the organically shaped massive of the building as it gives a natural and rustic finish to it. This part of the structure was designed to reflect wavy hills which are a natural background to cottages and stone pathways. With the time, the shade of the timber would be-come more greyish what would result it the building blending into it's quite grey surroundings. That would make an effect of hills even stronger as it would be the curved line that would be outstanding from its environment, not the colour. The vertical pattern of timber boards follows the flow of the glue-lam beams, optically dividing the length of the walls. If we'd look closer, we'd notice that it also brings on mind the stripes of the freshly broken ground covering fields

## PERFORATED METAL CLADDING



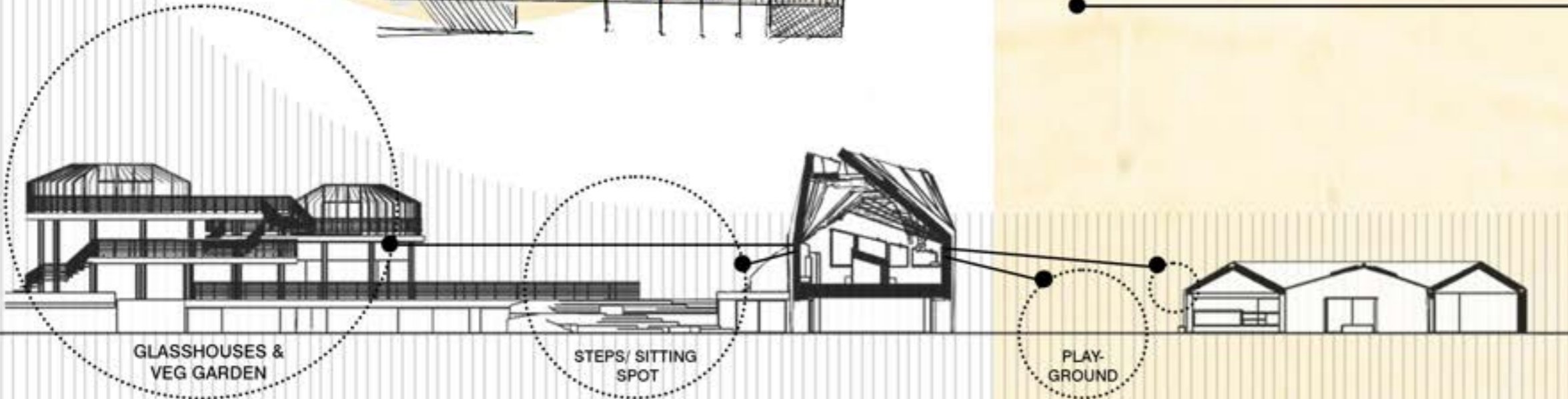
The perforated metal cladding, covering the stable building, window reveals and a couple of other, smaller parts of the elevation, was chosen to break the organic look of the larch cladding and highlight the differences between the architectural style of two parts of the building; the organic one that repre-sents hills and the one that reflects human made cottages and sheds. Bold and vivid colours of the cladding bring playfulness to the design but also add a peacocking element to it. The mixture of clash-ing finishes allows to reflect the image of a roost where a raw timber structure is decorated by glossy and truly colourful bird's feathers.



C  
L  
A  
D  
D  
I  
N  
G

# 04: Structure Development

Yukihiro Akama



An important part of the 'Roost' concept was creating an impression that the part of the building that situates Café on the Roost, would seem to be suspended like a nest. It was crucial that the community café, that is the heart of the farm, would be an observatory point so visitors could have a view onto what is going on outside. The café is placed at the very centre of the farm, with windows pointed to the stables and the playground at the east side, and to the glasshouses, veg gardens and stone steps at west. Guests would have a decent view onto the works and activities carried out at the farm, to the windows of alpacas' and goats' quarters and to the sunset light coming through the walls of glasshouses. This setup also allows for a better supervision of children playing outside, when their parents or guardians for some reason must be at that time inside

## WINDOW REVEAL

of the building. The Way that the windows are set in the shell of the building meant to look accidental, thereby mimicking natural and random setup of bird holes covering hillsides or rocky cliffs. The depth of the window reveal that creates a form of a nook, is another reference to birds' hollows. Wide windowsills have been dropped to the level of a sitting in most of the large windows in the café so they could be occupied as benches. The form of a niche and the fact that it is situated at the level of a first floor, gives a sensation of sitting on a perch or looking out through the nest hole.

A R C H I T E C T U R A L I N S P I R A T I O N



# 04: Structure Development



West Side

Observatory

Geographical position of the 1st floor block required an installation of window openings to the west and east side to maximise the view outside. But, because of lack of the light coming from the south, it also required cutting into the structure of the organic roof. Glazed sides of the suspended pathway stretch through the whole roofline, letting the daylight into the building. However, the depth and the angle of the cut created by pathway would not provide enough light for indoor veg garden. Therefore, some of the window openings have been expanded onto the roof forming large skylights. In some places, the window reveal has been elongated to become an eave window. Re-veals have been finished by the perforated mesh used also for the animal hatch. Vivid splashes of colour, placed to make an irregular pattern, respond to the idiosyncratic character of the building, and mark it with a radiant feel.

W  
I  
N  
D  
O  
W  
R  
E  
V  
E  
A  
L

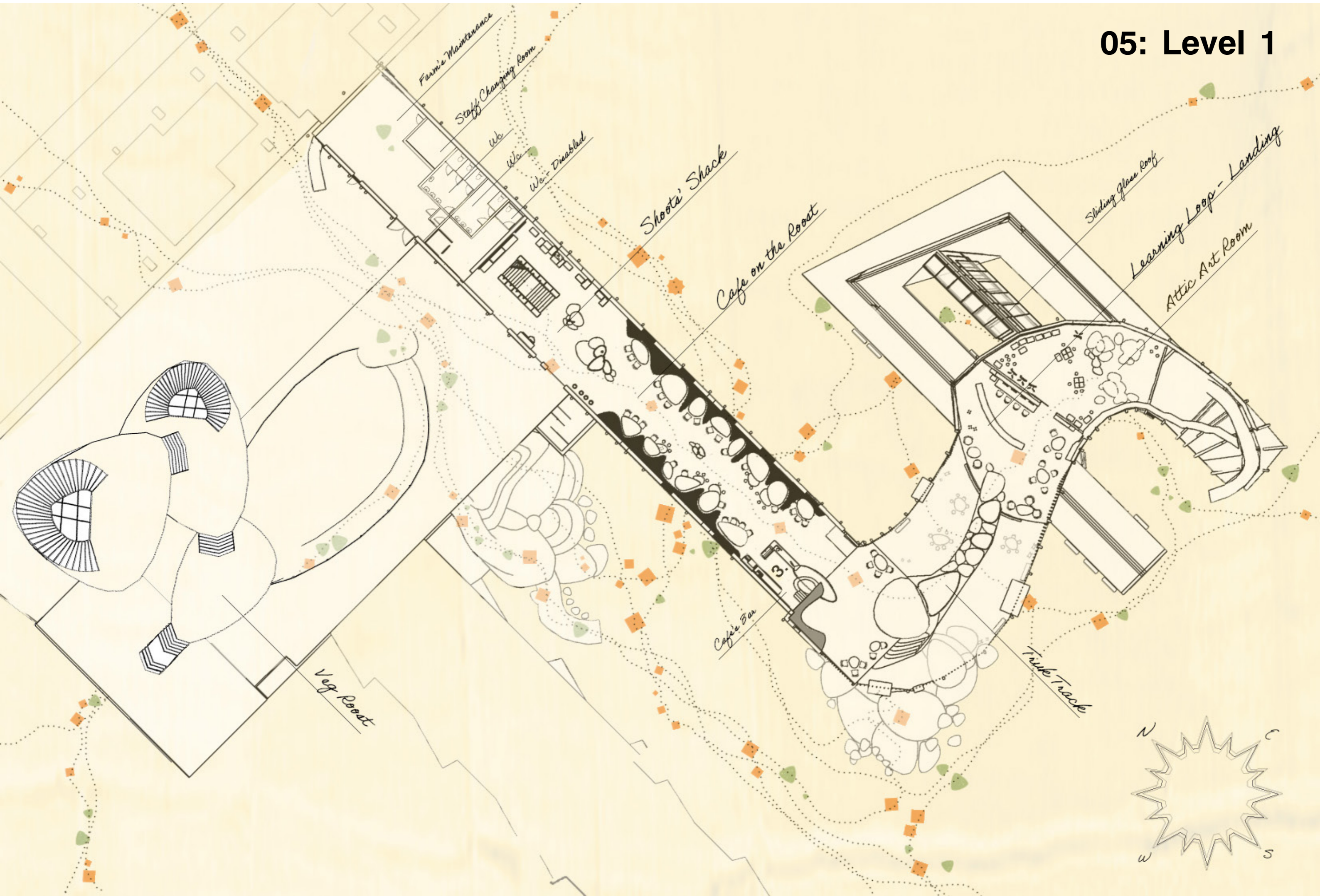


www.ptakiozdobne.pl

# 05: Level 0

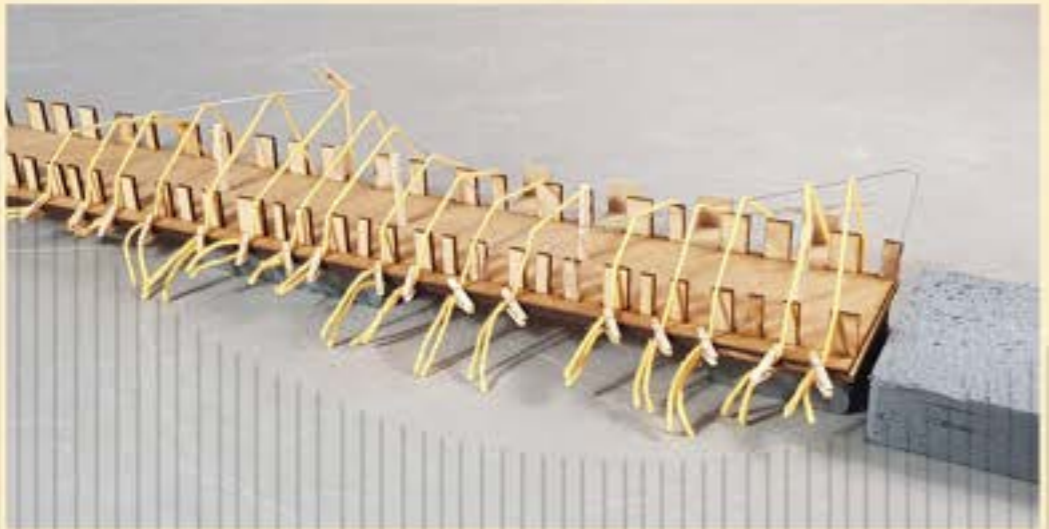
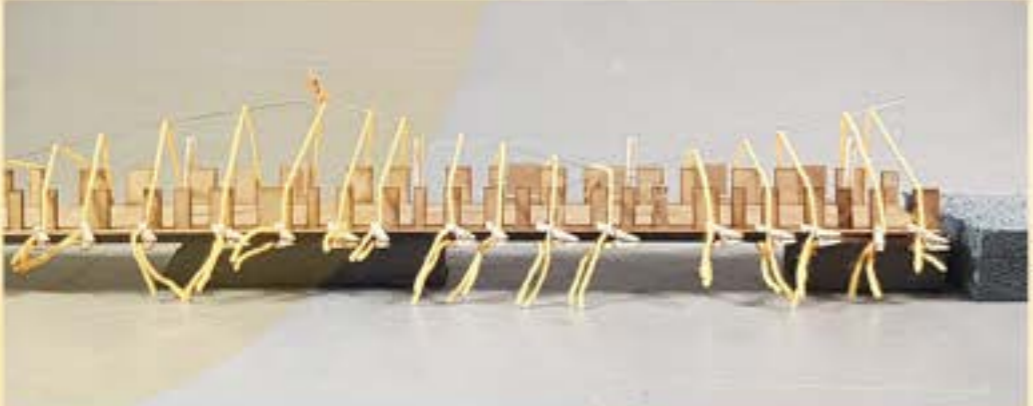


# 05: Level 1



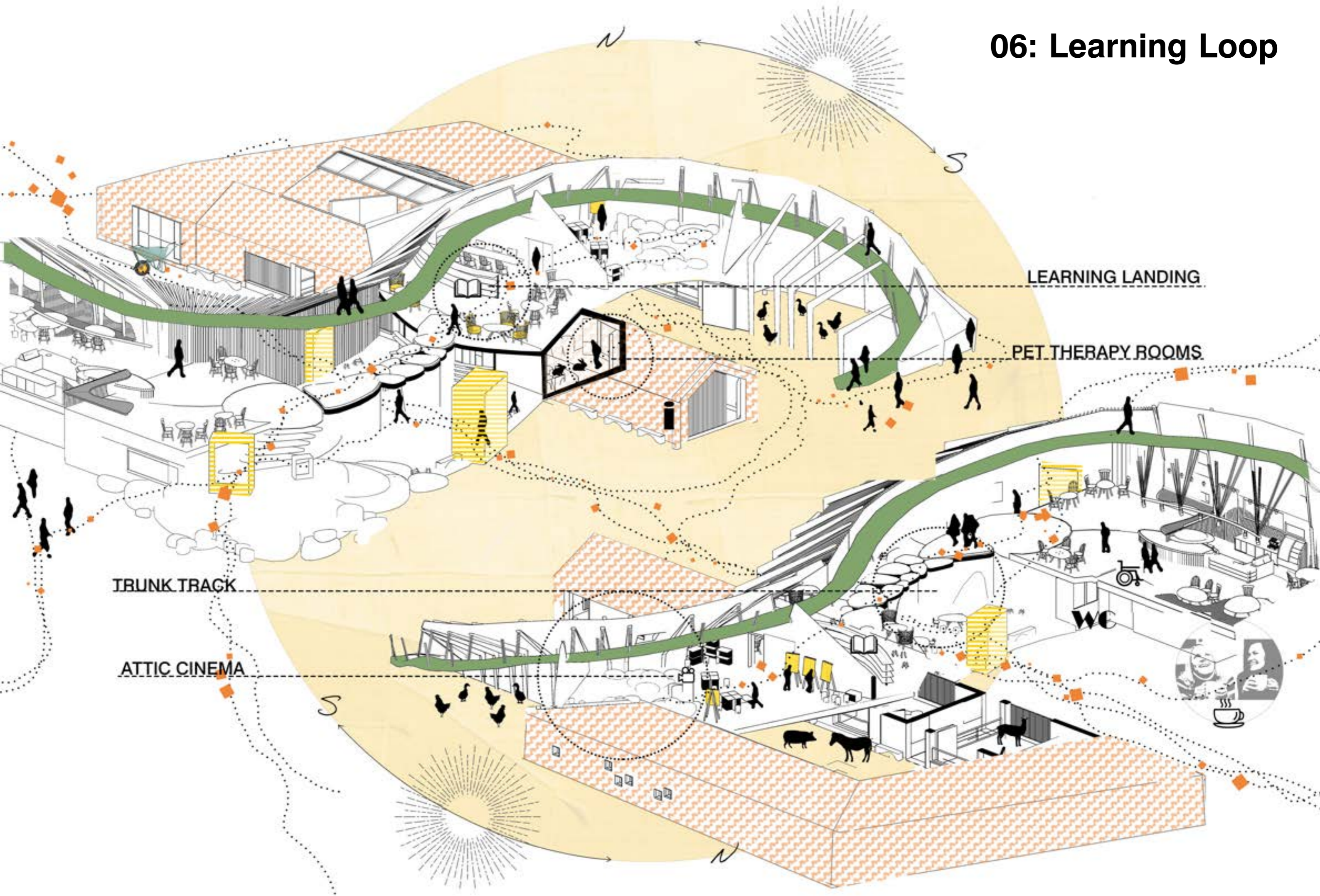


S  
K  
E  
T  
C  
H  
M  
O  
D  
E  
L  
D  
E  
V  
E  
L  
O  
P  
M  
E  
N  
T



S  
K  
E  
T  
C  
H  
M  
O  
D  
E  
L  
D  
E  
V  
E  
L  
O  
P  
M  
E  
N  
T

# 06: Learning Loop



# 06: Learning Loop

## TO INCREASE ENVIRONMENTAL AND SOCIAL AWARENESS...

Learning Loop is an **interactive zone**, where the visitors can find educative resources such books and magazines, as well as computers, printers, or photocopiers. It has been designed to answer to the needs of families and children groups but also to the adult neighbours of the farm. The main purpose of this area is to increase an interest of the local community in studying nature, sustainable ways of living and to strengthen human care for **b i o d i v e r s i t y**.

This open space that encourages social interaction serves also as the main entrance to the farm's facilities. When entering the Loop, guests are welcomed by information boards and an interactive map of the object.

From the ground level they can access pet therapy rooms, playground that is situated at the north wall of the Loop, and toilet units. The first level of the Loop is formed out of the two landings that are connected by a bridge-like passage named a Trunk Truck, adequately to its form. By taking the stairs, visitors enter the first landing that is a part of the Café. From that point, if they face north, they will see the whole length of the Café, the Shoots' Shack, and the entrance to the Creative Cave-the workshop unit. If they walk across the Trunk Truck bridge, they will get to the second landing, with library and IT zone, designed for adults and older **k i d s**.



\* Look page 33-34



# 05: Learning Loop

The concept behind the second deck was to turn it into a cosy, attic like library where visitors could find information on gardening or sustainability. They would find computers, books and magazines issuing environmental changes and ideas and developments that would help to fight them, but also other resources that would help to build an affection towards nature and inspire to bring it into everyday life. The library is open to the main hall so the guests, potentially families or student groups could stay in a sight field and keep an eye contact. Slopy roof as well as the timber screen turn the east wing of the Loop into a loft like landing, mimicking those that could be found in old farmhouses. The choice of chairs intends to highlight a rustic vibe of the library. Just when we pass the library, we enter the Attic Art Room that holds an adaptive studio purposed for performing art activities, group classes or exhibitions.

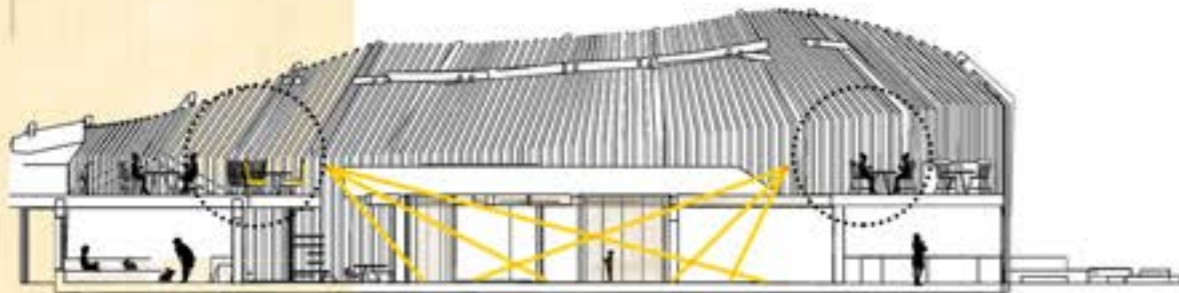


Patricia Urquiola

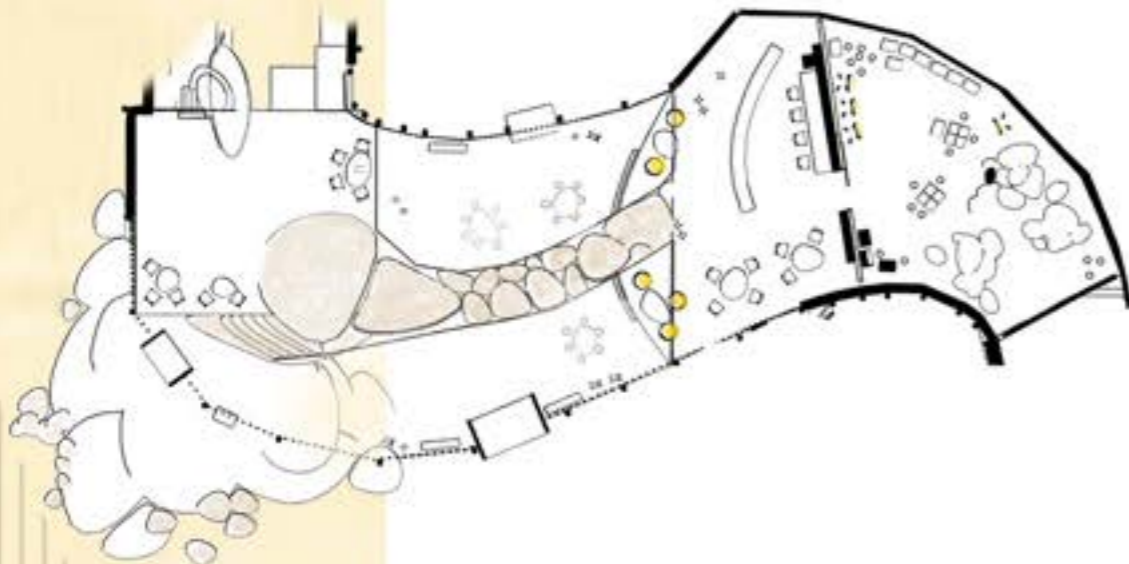
LEARNING LOOP SECTION PLANS



● Cross-section of the 1st floor library and pet therapy rooms.



● Cross-section of the Learning Loop showing access to all connected facilities such as pet therapy rooms, the 1st floor library and the café.



● Learning Loop - Floor plan.

Learning Loop has been constructed in a way that answers to the principals of the '14 biophilic pat-terns', especially those regarding the nature of the social perception: asylum, perspective, mystery, and risk. People show an inherent preference towards some spatial settings. Acknowledging them in design allows to create a



### PLAYING WITH TRUNKS

The idea of shaping the bridge passage into a tree trunk track was inspired by childhood games of overcoming obstacles. A sense of risk that it creates awakens imagination and will for an adventure..

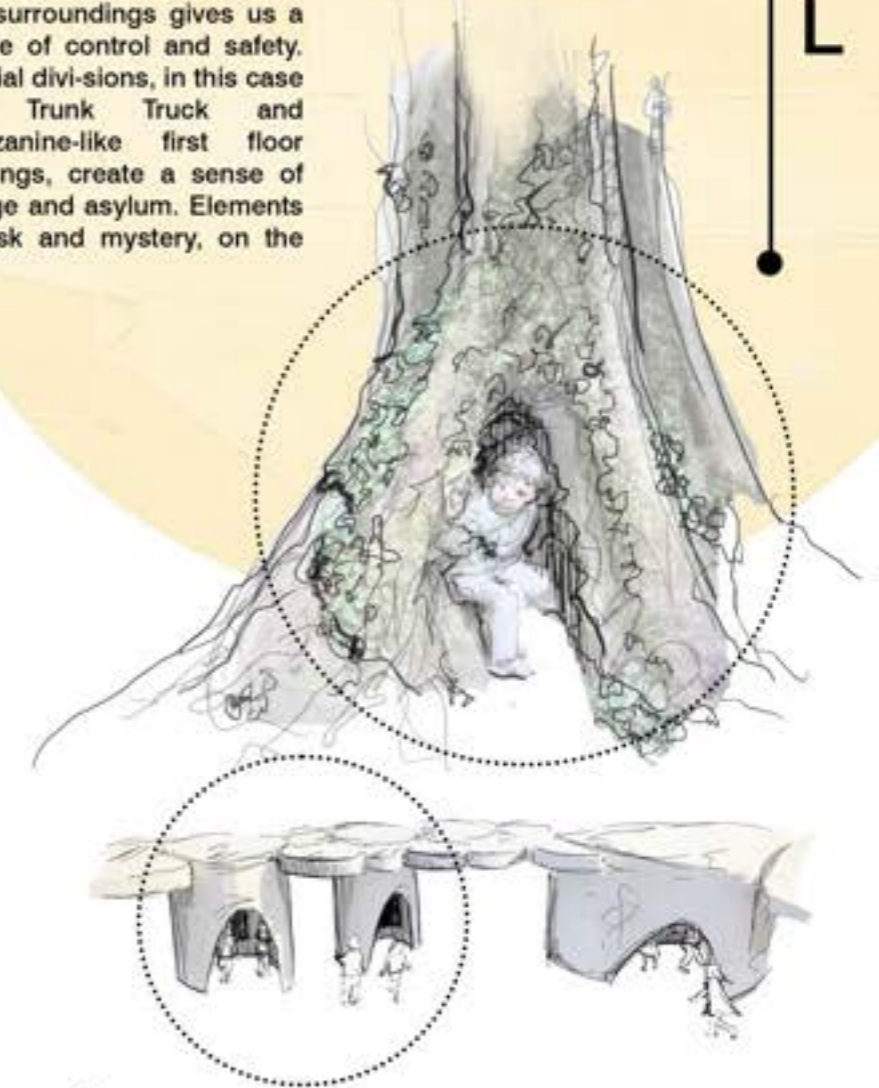
Space users have a direct access to the Pet Therapy Rooms both from the outside, as well as from the inside of the building what makes the rooms to be inclusive to the central part of the farm.

successful space engaging human interaction. Factors like the geometry or the complexity of a space influence human mood, emotions, and behaviour. To feel comfortable in a certain space, we must be able to occasionally glimpse at the distance and feel a sense of prospect. Chance to observe our surroundings gives us a sense of control and safety. Spatial divisions, in this case the Trunk Truck and mezzanine-like first floor landings, create a sense of refuge and asylum. Elements of risk and mystery, on the

Open space between the Café and the Learning Loop created a vibrant dynamic as well as brought a sense of prospect that increases comfort and perceived safety and reduces boredom.

### A WAY TO CHILD'S CURIOSITY AND IMAGINATION

other hand, stimulate neuroactivity and our senses and are significant to the development of motivation during a learning process.



Bridge that connects two parts of the facility creates an illusion of being an adventurous and challenging pathway that can stimulate imagination of all visitors, no matter what age they would be.

## 05: Learning Loop

### MYSTERY & PERIL

LEARNING LOOP CONCEPT

# 05: Learning Loop



Ground floor of the Learning Loop has been mainly designed for the youngest users of the farm. It provides access to the junior library, interactive games, and activities. From here people can directly access the café, pet therapy rooms and outdoor playground. Layout of the space allows for a constant contact between a child and its guardian, even if a guardian decides to have a cup of coffee upstairs.

Timber screen that creates the side walls opens the space, showing a view to the park on southside, and a playground on the northside. The view itself, but also the form of the screen that relates to fractal patterns, are highly stimulating to a human neuro-system in the way that helps to balance it. This structure allows for a massive amount of daylight as well as it gives a glimpse of activities to those who are passing on the outside what brings a vivid feel to the area. Combination of those elements with an irregular and organic shapes, multileveled and open space is rich in stimuli that mimic a natural environment.



Zig+Zag Stool- Sakura Adachi



Sheep Chair- Takeshi Sawada



Curve Bench- Brodie Neil



Sheep Chair- LadyYard

# 06: Attic Room

Rules applied to traditional spatial settings tend to force a user's behaviours like, for

example, taking seats in a predictable and pre-planned manner. It doesn't give them any

possibility to arrange and adjust the environment they are in, therefore, the sense of a

personal ownership of the space is lacking its strength. Spatial elements that can undergo a constant transformation, generate a sensation of diversity and lively dynamics. A modular room set ups help to break the routine, make activities more entertaining but also encourage, motivate, and strengthen a creative potential by allowing visitors to arrange the rooms' features to their needs .



Easel by Andreas Struppler

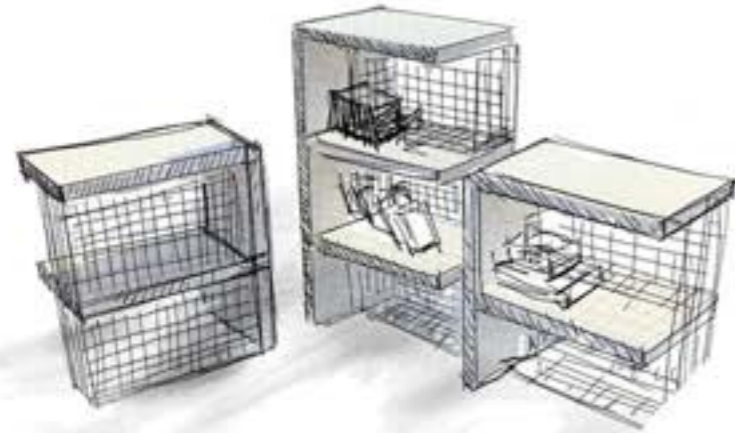


Sea Pebbles by KATSU

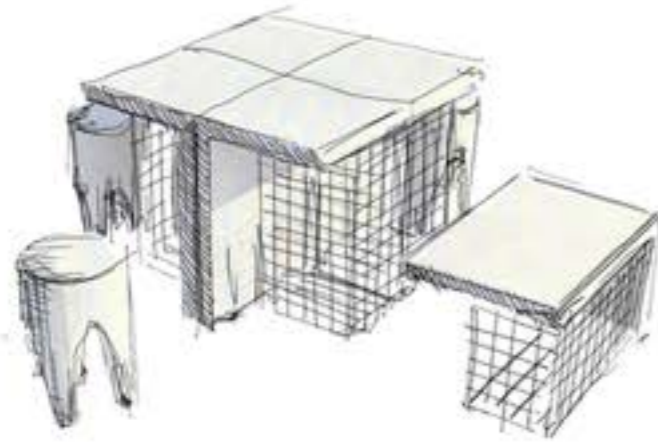


# 06: Attic Room

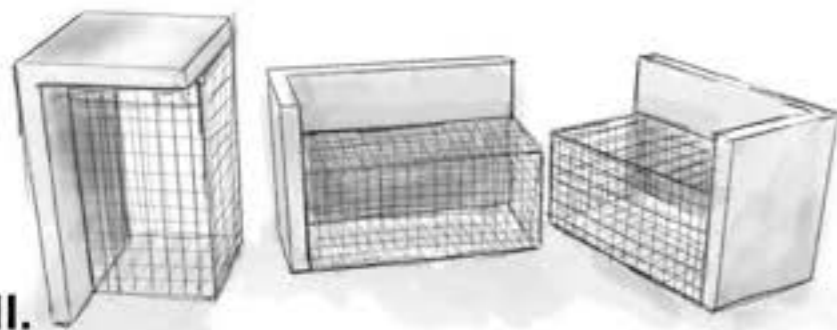
I  
N  
S  
P  
I  
R  
E  
D  
  
B  
Y  
  
H  
A  
Y  
  
C  
U  
B  
E  
S



Elements could be used as a storage: differently positioned shelves and display units.



If positioned vertically, units can be used as tables which could be easily assembled to create a larger surface.



Cubes could be used also as higher stools (when positions as child table at the 2nd drawing) or as benches in lower version as shown at the 3rd drawing and higher like at the 2nd illustration.



Modular furniture designed for the Attic Room were inspired by hay cubes that are an integral part of a shed's image. In the past, but sometimes even these days, they could be seen used as seats or benches. Often, they'd serve as mountains to climb or walls of castles or labyrinths when combined with a child's imagination. The universality of their shape allows for a creation of the furniture that can be put together in various combinations. The intention was that every unit would be the same but could fulfil a different function, depending on how it has been positioned.

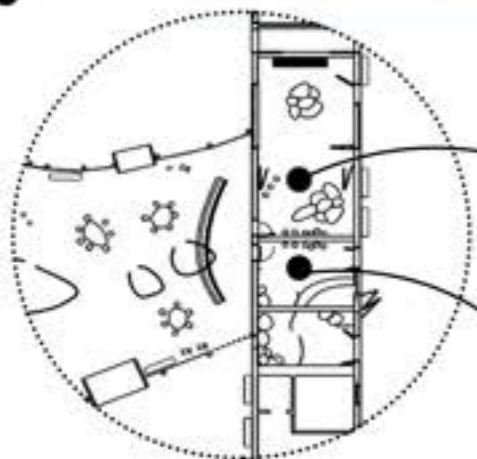


# 06: Pet Therapy Room



“We connect with the animals. It helps to release any cortisol that’s in the body. It also increases your happy hormones,”

- McCheyne , Goat Joga



**Goat Grotto**

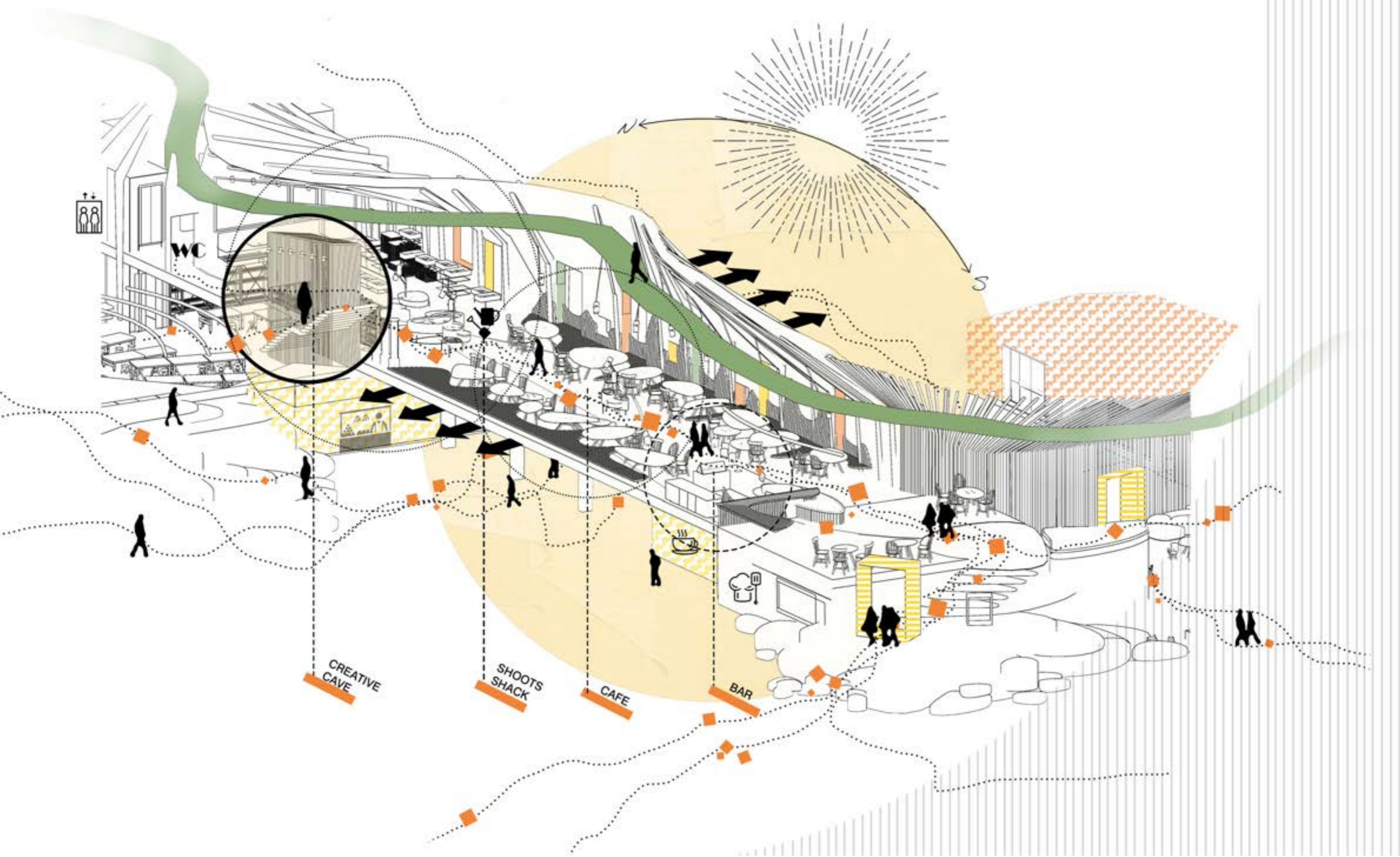
**Bunny Burrow**

Farm on the roost contains two Pet Therapy room. One of them is proposed for bigger groups and bigger animals like goat. It's designed to resemble a sort of a yoga studio where people can freely interact with the animals. The other room is destined for smaller animals such bunnies or guinea pigs.

Contact with animals provides us with comfort, add courage to child's mind, helps to practice empathy and builds a will of taking care of others. In a rapidly living society a role of a therapeutic activities is constantly increasing. Contact with other living creatures increases the production of oxytocin and other "happy hormones"

hat support relief of anxiety, de-pression, or PTSD. Having this form of therapy or simply activity available to a local community would not only help many individuals to nourish their mental health, but it could also help to build stronger bonds and friendships among the neighbours.

# 07: Cafe on the Roost



A  
R  
C  
H  
I  
T  
E  
C  
T  
U  
R  
A  
L  
I  
N  
S  
P  
I  
R  
A  
T  
I  
O  
N



Herzog & de Meuron Slow Food Pavilion



Peter Pichler Architecture



SCS: Smabruk



Sauerbruch Hutton

The main principal was to place the Café in the very heart of the Farm. It is a casual space destined for relax, social interaction, a place where locals can bring their families or friends for a lunch or meet their neighbours. Beside of having a central location, the Café was placed at the higher level what created a sensation of being in a nest or an observatory point from

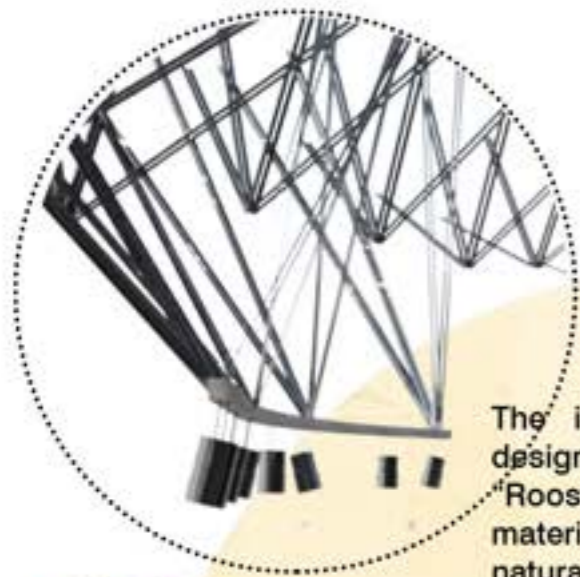
which visitors could have a view onto what's happening at the outdoor part of the Farm. The Café has an open connection with the Learning Loop. It allows for an eye contact between children and their

# 07: Cafe on the Roost

guardians if they'd decide to have a cup of coffee. This open and interconnected form of the interior creates a vibrant atmosphere and forms a sense of unity between the activities happening at the farm.



# 07: Cafe on the Roost



The interior of the farm was designed to imitate the title "Roost". Therefore, the chosen materials meant to reflect a natural vibe that could be felt in a traditional timber farm-house. Black metal finishes were added to some of the elements like lighting or sittings to highlight the space in the same way that glossy birds' feathers decorate their nests. Washed cork covering the walls, reminds of a texture of an eggshell, especially when we look at the bended surfaces of the sloping ceilings. The choice of the flooring was also in-spired by eggshells, but this time showing its cracked version. This solution allowed to use the timber offcuts that would come from the building structure and elevation.



Interior Inspired by the Texture of an Eggshell and a Glam of Birds Feathers .

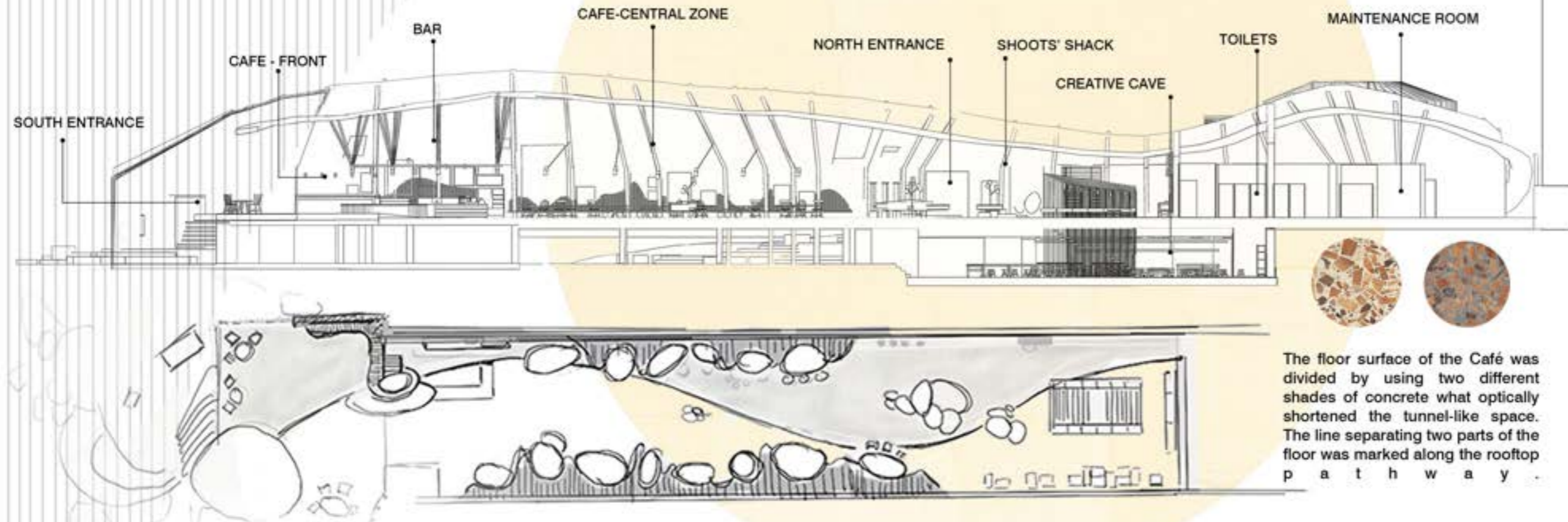


W H I T E - W A S H E D C O R K



TERRAZZO - RECYCLED TIMBER FLOORING

# 07: Cafe on the Roost



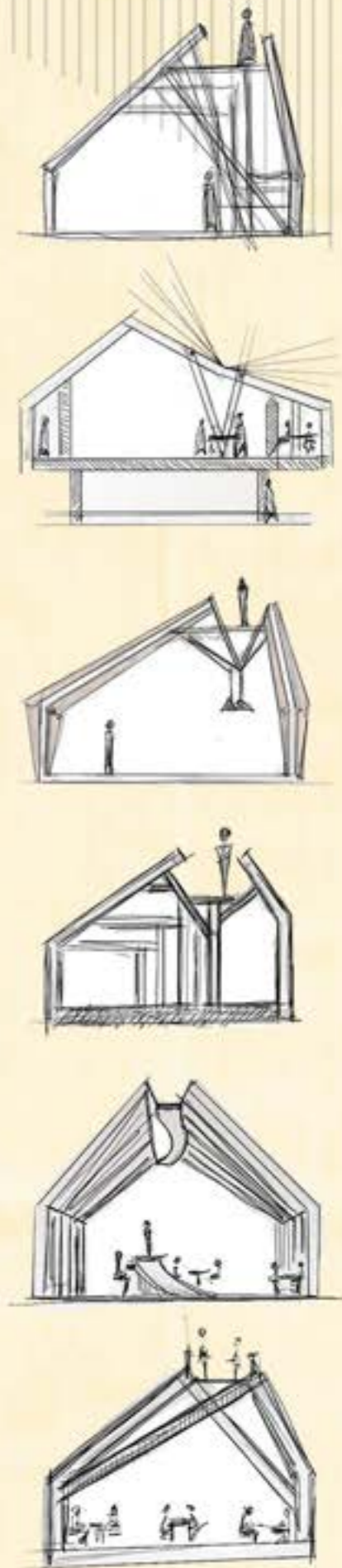
The floor surface of the Café was divided by using two different shades of concrete what optically shortened the tunnel-like space. The line separating two parts of the floor was marked along the rooftop pathway.

**BENDING  
SPACE  
to  
ALTER  
PERSPECTIVE**



The idea of showing the ribbed ceiling structure came from combining the need of optically shortening the café hall as well as the will to reflect the elements characteristic to farm-houses. Repetitive pattern can significantly change the perception of spatial dimensions if used in right way. The initial idea was to shape the shell of the building in an organic manner that from the outside could resemble hills, and on the

inside - curved shapes of egg-shell. Therefore, the pathway that creates the outline of the main structure was stretched not only along the vertical but also along the horizontal axis. The pathway cuts into the ceiling in the way that allows to see those who walk on it, adding an extra dimension and vibrant feel to the Café. It also gives a great access to the daylight.



# 07: Cafe on the Roost

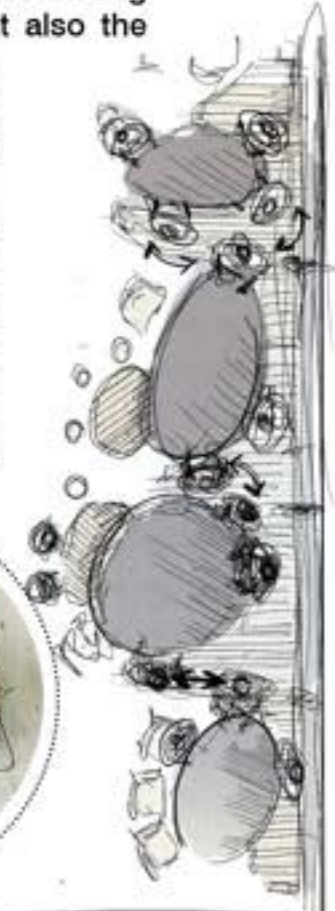


The bar has been placed in the front section of the Café so it's easily accessible form the Learning Loop. The food preparation areas and the kitchen storage are located just below the bar so a direct access to them is not visible to visitors.

# 07: Cafe on the Roost



As the Café meant to serve as an observatory point, giving a glimpse to the different areas of the farm, sittings have been placed along the windows. This form itself, but also the benches and tables are arranged in the way that resembles nests placed on a birds' roost. Sittings are adjusted to the needs of all age visitors as well as to the needs of a wheelchair user. Irregularity of organically shaped tabletops and benches adds an extra dynamics and freedom to the space, especially that the sittings are not clearly allocated to the tables.



Zig+Zag Stool- Sakura Adachi



Ercol chairs by Matthew Hilton



The set of chairs and stools of different heights was selected as a reference to a traditional farmhouse interior. Those "granny" chairs bring lots of cosiness to the open space of the café what works in favour of engaging social connections.

# 08: Shoots Shack

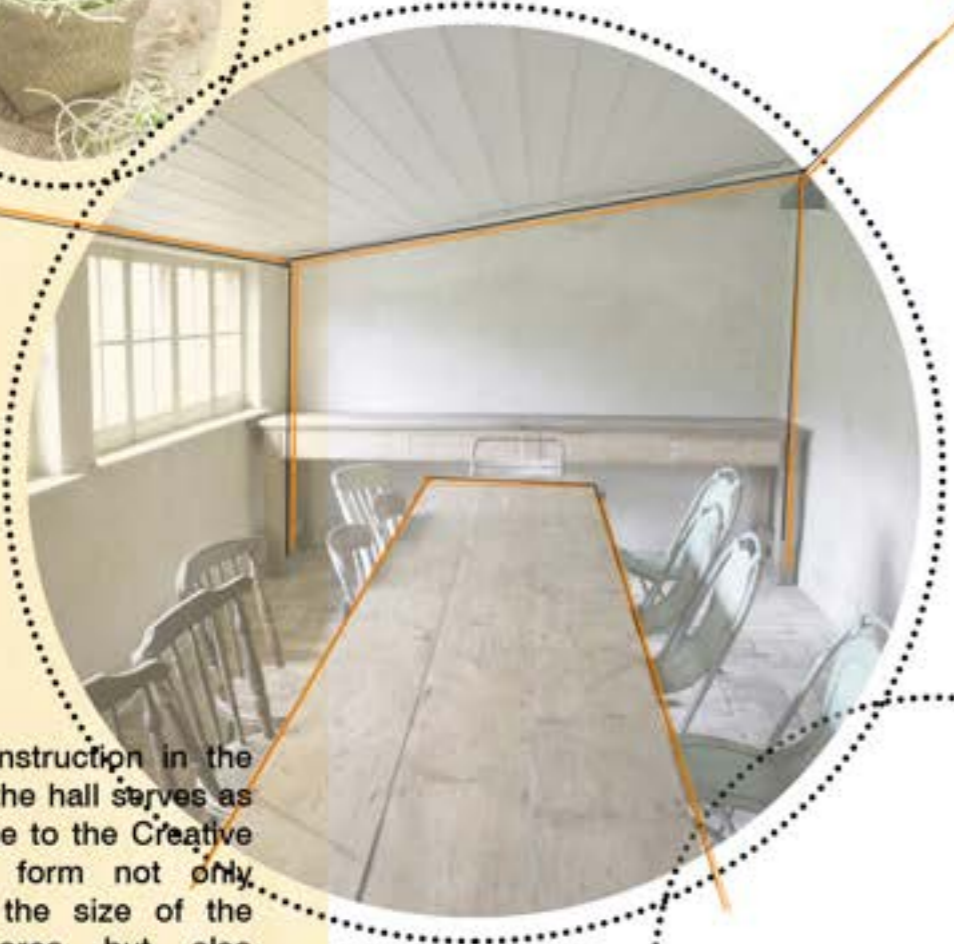
Shoots' Shack similarly to the Learning Loop is a form of an educational zone. In this case on a very practical level. It's been located just behind the café with a direct access to the Veg Roost outside. It's a space where visitors could practice a bit of indoor gardening but also use their harvest to prepare meals served by the café. Its purpose is to inspire locally living adults and youth to investigate sustainable living solutions.

S  
H  
O  
O  
T  
S  
  
S  
H  
A  
C  
K  
  
-  
  
I  
N  
D  
O  
O  
R  
  
V  
E  
G  
  
G  
A  
R  
D  
E  
N

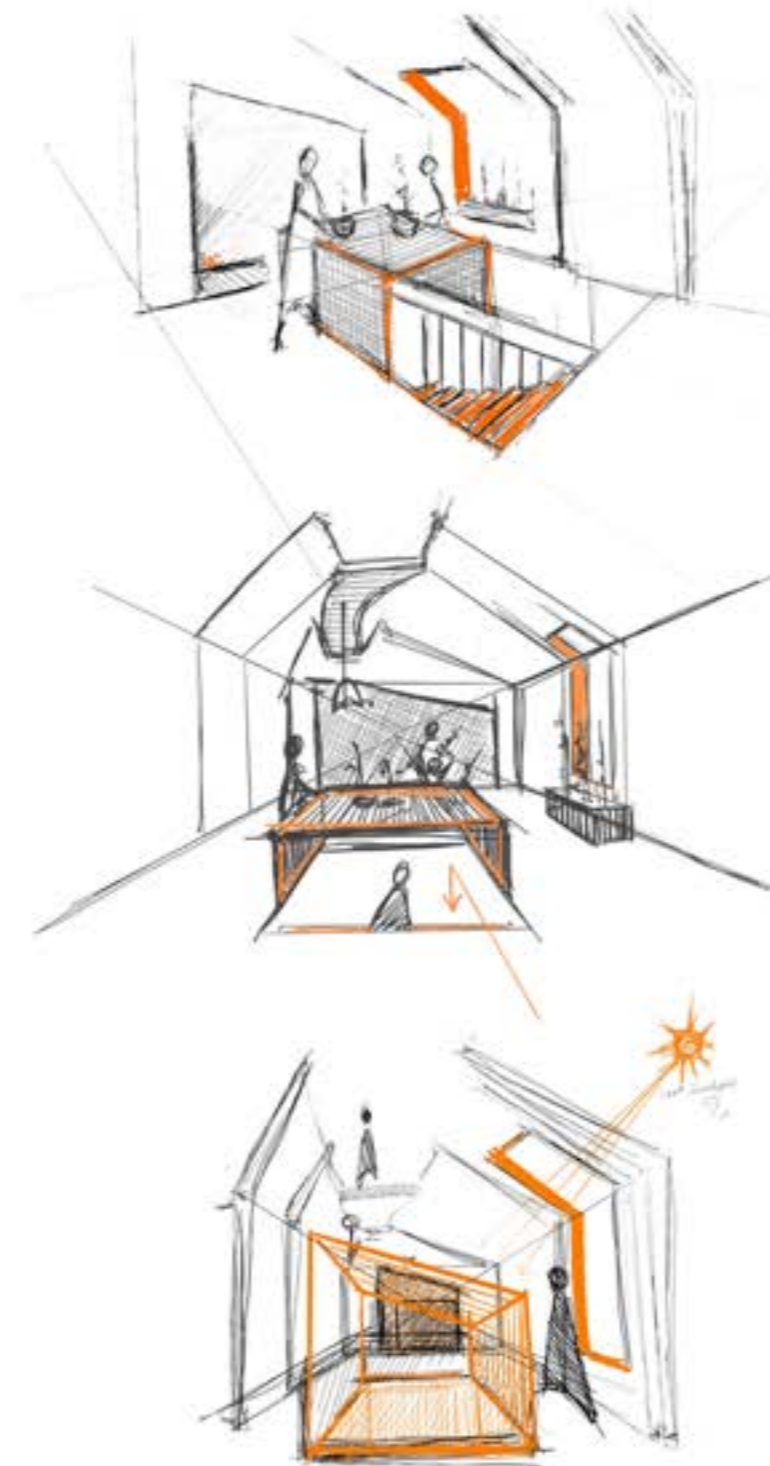




# 08: Shoots Shack



Timber construction in the middle of the hall serves as an entrance to the Creative Cave. Its form not only multiplies the size of the planting area but also creates a sensation of de-scending to the actual cave. Initially the idea was to shape it as a worktop but later the "hood" of the passage was elevated and twisted to resonate with the shape of the main hall. This way it also resembles slopy ceilings that can be seen in old sheds.



S  
H  
O  
O  
T  
S

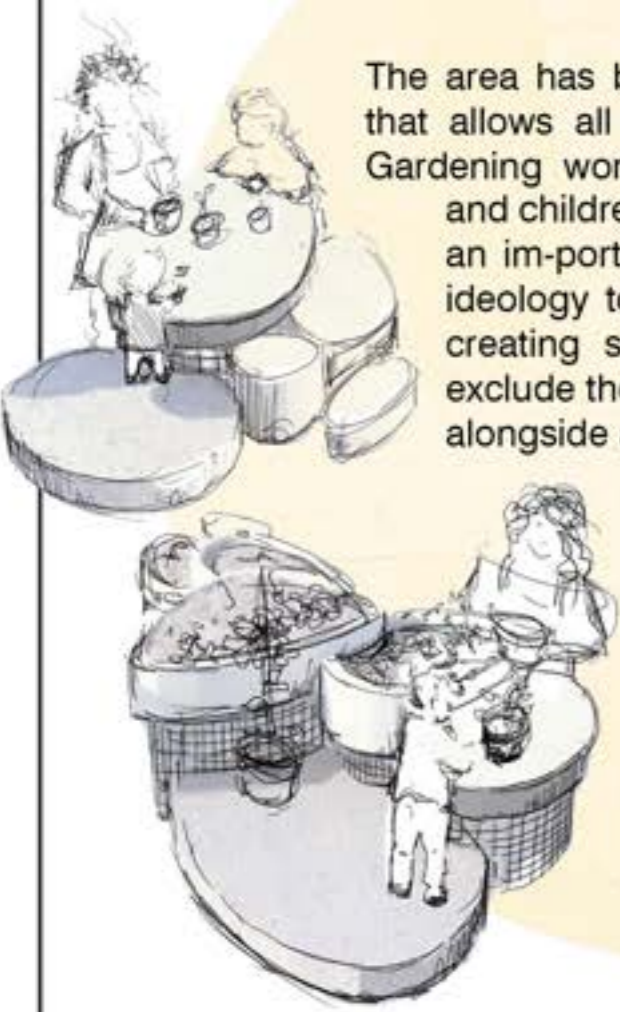
S  
H  
A  
C  
K

-  
C  
O  
N  
C  
E  
P  
T

I  
N  
S  
P  
I  
R  
A  
T  
I  
O  
N

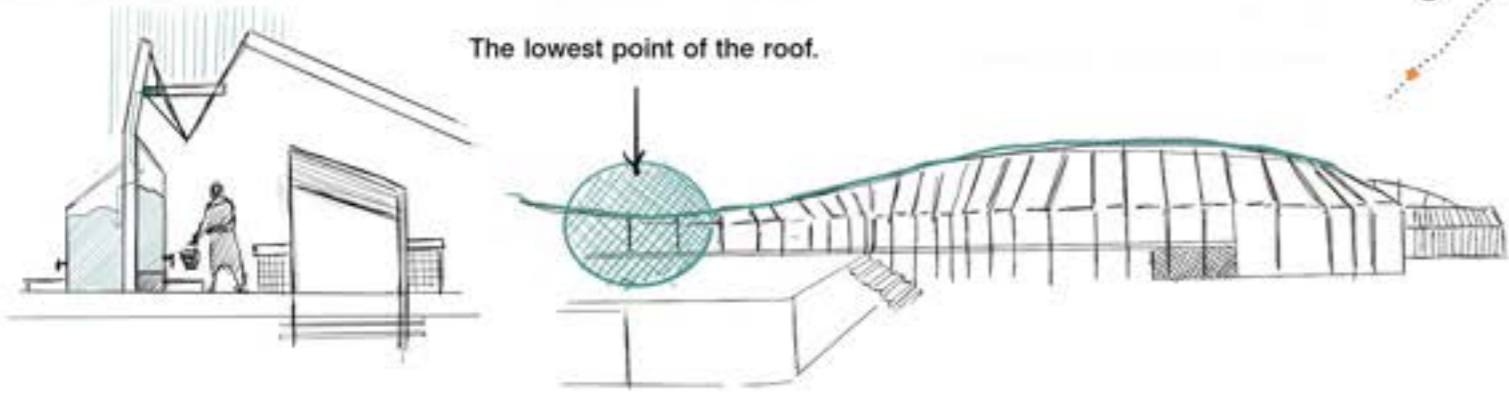


# 08: Shoots Shack

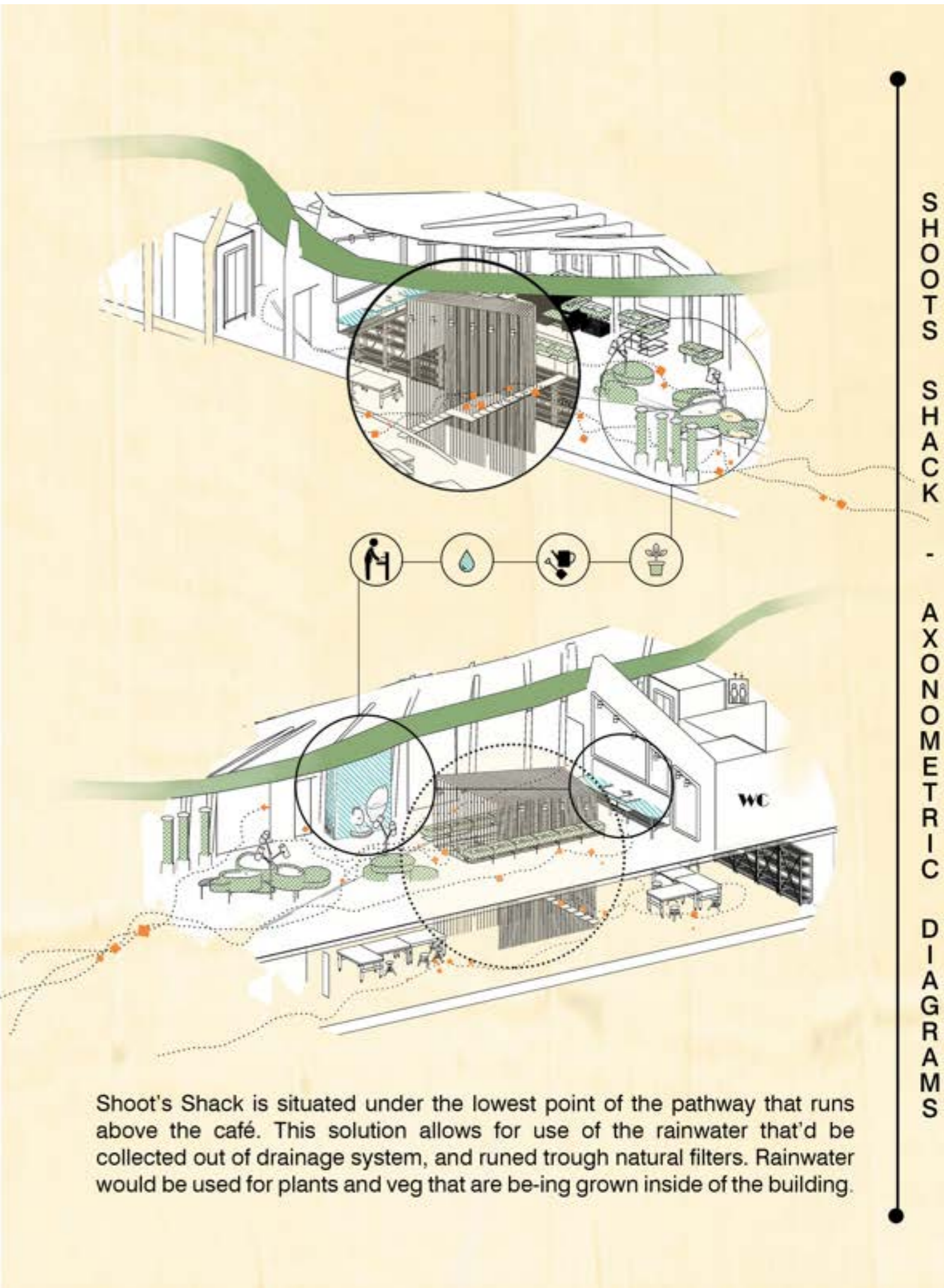


The area has been designed in the way that allows all uses to access it easily. Gardening workstations are multileveled and children could work together. It is an important element of the design ideology to encourage the youth by creating spaces that don't limit or exclude them from activities. Working alongside a parent, animator or other guardian helps to strengthen bonds between them and children and build a confidence in young ones.

## WATER DRAINAGE - SUSTAINABLE WATER SOURCE



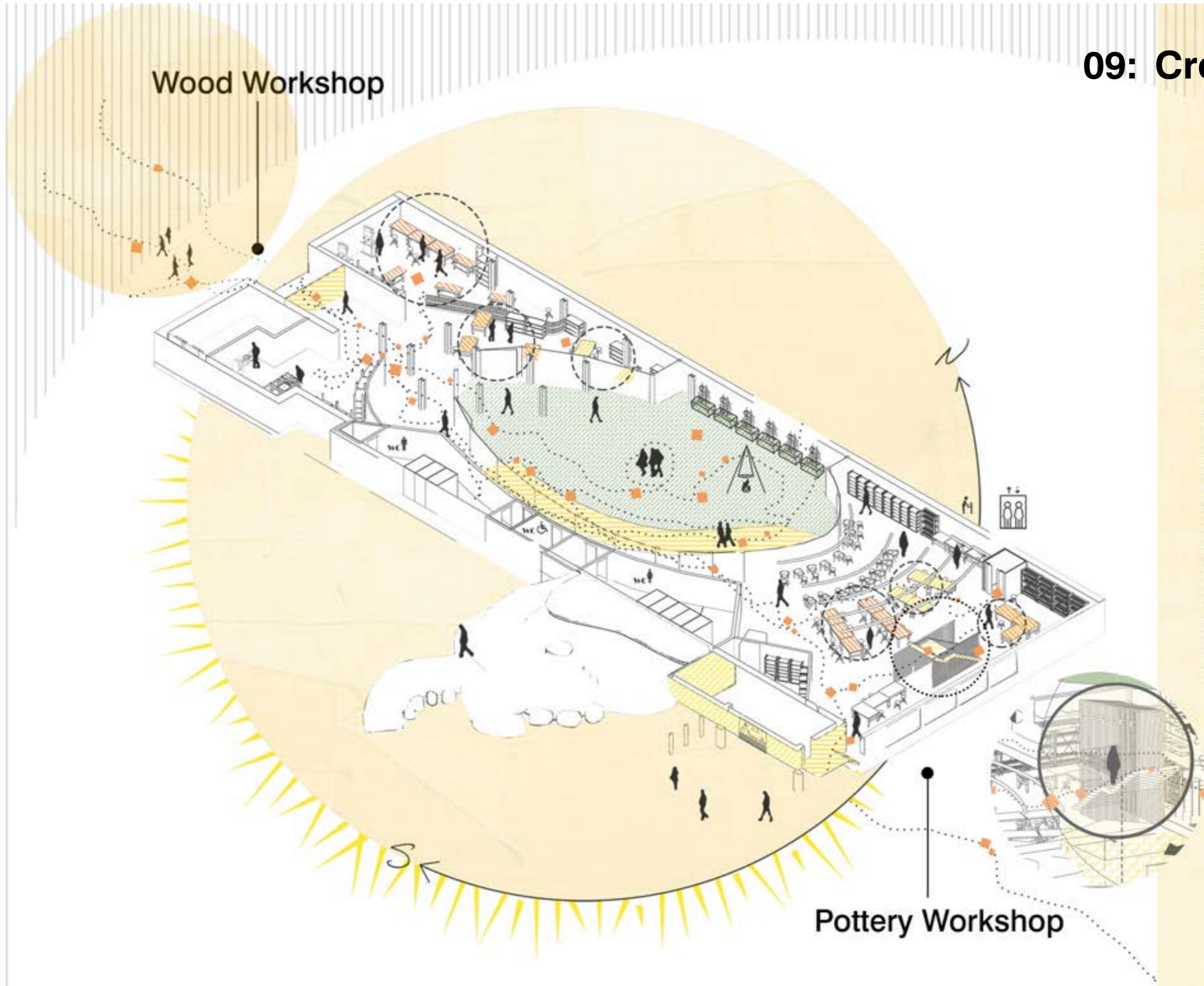
The lowest point of the roof.



SHOOTS SHACK - AXONOMETRIC DIAGRAMS

Shoot's Shack is situated under the lowest point of the pathway that runs above the café. This solution allows for use of the rainwater that'd be collected out of drainage system, and runed trough natural filters. Rainwater would be used for plants and veg that are be-ing grown inside of the building.

# 09: Creative Cave



Farm on the Roost provides educational activities related to a real farm life, such as gardening or animal care. But to fully enrich Leith's life, build strong bonds, and discover a real potential of the local community a decision was made to use a ground level area, previously used as garages, and turn it into workshops. The original structure was roofed but in order to increase the daylight access an oval opening was cut out and turned into an outdoor patio settled between the workshops. This way, two workshops, both pottery and wood workshop have a constant access to the view of nature, which enhances working environment and helps to feel relaxed and inspired.

# 09: Creative Cave

The main principle of designing both workshops was to include every age group as well as wheel-chair users. Work areas have been divided by using different colours to mark three different heights of chairs and tables what makes it easier to navigate the space either by families, friends, or school groups.



1 | Yellow Stool by Renata Moura

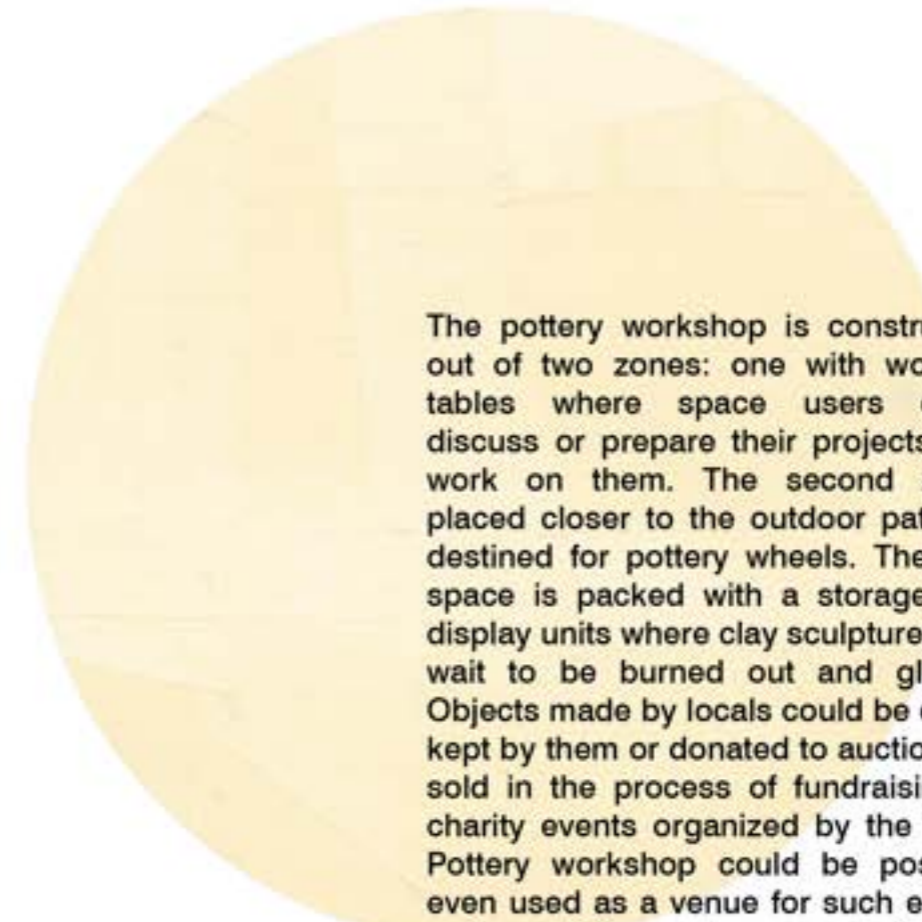


2 | Offcut Stool by Tom Dixon



3 | Adjustable Stool by Konstantin Grcic

# 09: Creative Cave



The pottery workshop is constructed out of two zones: one with working tables where space users could discuss or prepare their projects and work on them. The second zone, placed closer to the outdoor patio, is destined for pottery wheels. The wall space is packed with a storage and display units where clay sculptures can wait to be burned out and glazed. Objects made by locals could be either kept by them or donated to auctions or sold in the process of fundraising in charity events organized by the farm. Pottery workshop could be possibly even used as a venue for such events as the activity creates opportunities for groups to come together and share the experience with others either as a craftsman or a user. The facility gives an opportunity to individuals to build their art skills and enjoy their free time but it's also a wonderful place to meet with friends, families, or neighbours.



# 09: Creative Cave

Having access to a local wood workshop is an opportunity for the Leith's community to try their strengths in woodwork by undertaking simple domestic projects and gradually advancing their skills through more complex designs. A chance of building something by themselves or with neighbours can be empowering experience that can make them more confident and open to connecting and cooperating with others. Wood carving or carpentry can be a wonderful addition to one's skill-set, can be a hobby or a way of decorating one's home or making gifts for others. The activity also creates a field for mutual learning and collaborative projects which would be great way of gathering families, youth, and neighbours to get to know each other and work together. The hope was that the workshop would especially grasp the attention of locally living youth and provide an alter-native towards negative interests and activities.



**Table Saw Workbench**  
Remodelaholic.com



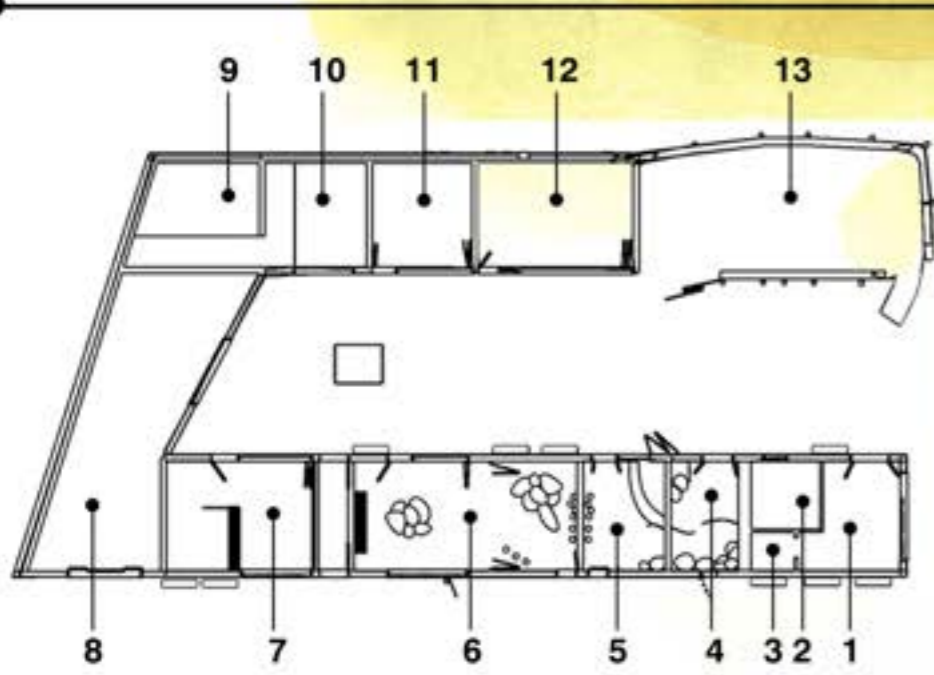
**CNC**  
Photo: Marcin Traczyk



**Lathe**  
Photo: John Crombe



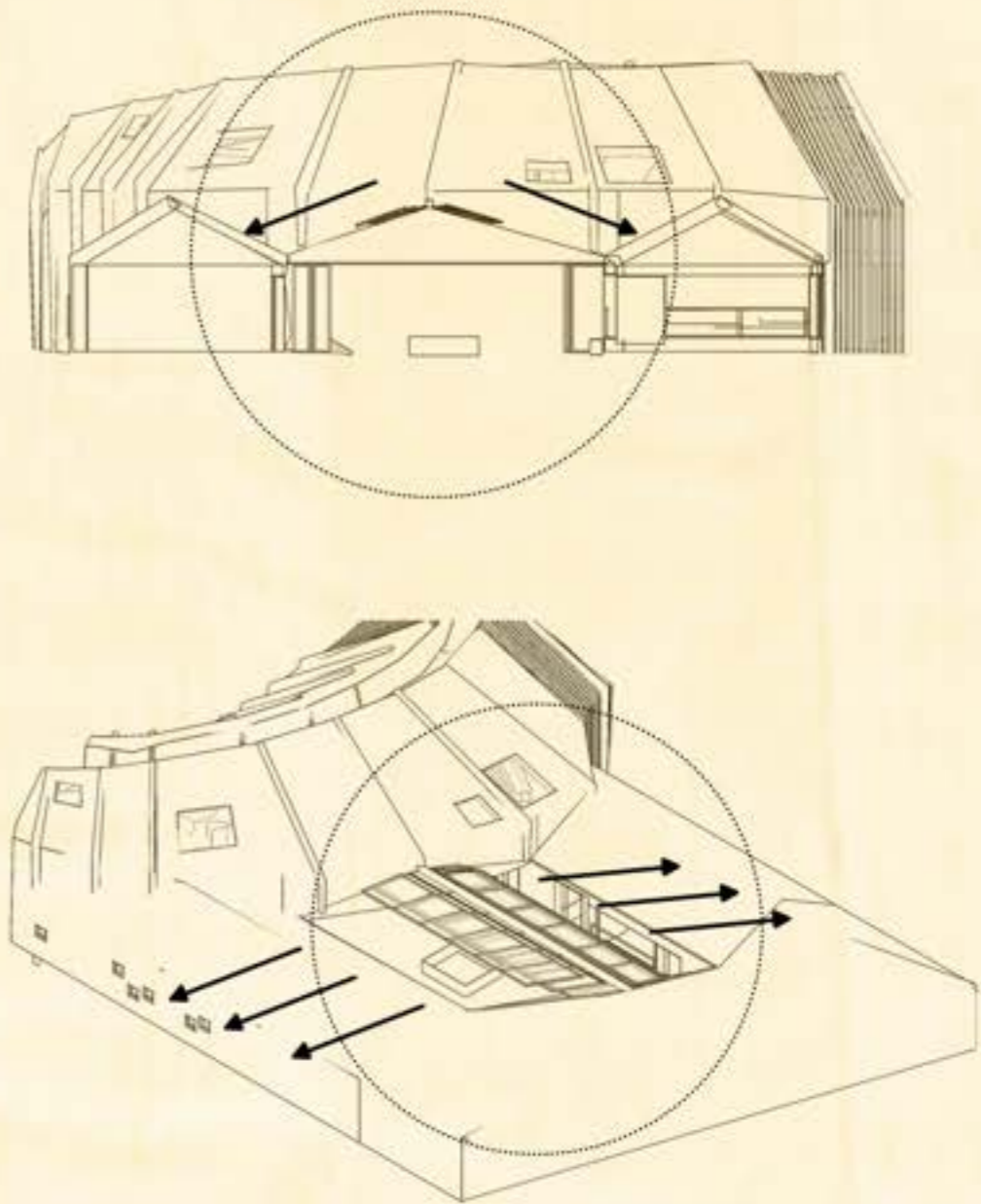
# 10: Pet Pen



- 1. Reception
- 2. Office
- 3. Wc
- 4. Rabbits/Guinea Pigs
- 5. Bunny's Burrow
- 6. Goat's Grotto
- 7. Alpacas
- 8. Maintenance/Food Prep
- 9. Sick Room
- 10. Hay Store
- 11. Minature Pigs
- 12. Shetland Ponnies
- 13. Farm Birds

Pet Pen is an important element of the educational side of the farm. Contact with animals teaches of kindness, gentleness, or empathy. Therefore, a possibility of taking care of another living crea-tures is crucial for our own development. Animal care can be very therapeutic activity to many in-dividuals but what's more important is that it could as well help to build friendships among the neighbours. The farm keeps animals like Shetland ponies, miniature pigs, goats, bunnies, or birds. All of them interact in a different way and require different form of care. This verity is needed so that every user either an adult or a child, could easily participate in caring for them as it requires different set of skills or physical capacity when it comes to care for different species. Some of the animals could be used in varied forms of therapies such as Storytelling with bunnies for toddlers or a yoga with goats for those a bit older.

# 10: Pet Pen



Because of the frequency of rainy, Scottish days, a big part of the Pet Pen has been sheltered by a sliding roof. The solution gives a possibility of adjusting the building structure to changing weather conditions. Therefore, during precious sunny days, farm users can still fully enjoy the warm breeze and radiance of the sun.





## 11: Veg Roost

Green terraces and other areas destined for growing veg and greens, are one of the fundamental elements creating the concept of the farm. Harvest would support the café's kitchen and its food-bank. The idea of having green zones, where local community can bond over planting food in their urban neighbourhoods, comes from a growing need to increase environmental consciousness as well as a need of bringing people together. Having lifted terraces increases the planting area as well as creates a shelter for other outdoor activities that would be happening outside in time of rain. Glasshouses allow for a longer use of the space throughout a year.

# 12: Outdoor Patio

Placed in between the workshops, the outdoor patio is a wonderful addition to the leisure areas. Sheltered from wind and partially from rain, the space is ideal for summer barbecue or meeting with friends and neighbours or simply for taking a break from work to stretch outside. Glazed walls maximize the access of the daylight to the workshops as well as give a view into greens and dis-tance, what can help to enhance the atmosphere and creativity level among the space users.

